

**Rapport d'essais** No. RN22-07517 Date : 07/12/2022 Page 1/26  
*Test Report*

**BFL France**  
**35 RUE JOSEPH CUGNOT**  
**49130 SAINT GEMMES SUR LOIRE**  
**France**

L'échantillon ci-dessous a été fourni par le client sous la dénomination :  
*The following sample(s) was/were submitted by the client as:*

N° Dossier SGS / *SGS Job No.* : RN22-07517  
N° Devis / *Quotation No* : DR22-03341 REV 1  
Référence client / *Client reference* : INVERSEUR DE POLARITE ELECTROMAGNETIQUE  
MODEL IPE PRO+ 100 N° 34268 + 34271  
Demandeur / *Buyer* : M BAYLE Olivier  
N° Commande / *P.O. No* : BON POUR ACCORD DU DEVIS  
Date de réception / *Sample receiving date* : 30/06/2022  
Dates d'analyses / *Testing period* : 30/06/2022 - 07/12/2022

Tests demandés / *Test Requested* : Selon la Directive RoHS 2011/65/UE et ses amendements (2015/863/UE)  
*With reference to RoHS Directive 2011/65/EU and its amendments (2015/863/EU)*

Méthodes d'analyses / *Test Methods* : (I) IEC 62321-2 : Démontage, désassemblage et préparation mécanique de l'échantillon / *(I) IEC 62321-2: Disassembly, dismantling and mechanical sample preparation.*  
(II) IEC 62321-3-1 : Screening du plomb, du mercure, du cadmium, du chrome total et du brome total par la spectrométrie par fluorescence X / *(II) IEC 62321-3-1: Screening of lead, mercury, cadmium, total chromium and total bromine by X-ray fluorescence spectrometry.*  
(III) Analyses chimiques de confirmation : cf tableau 2 / *(III) Wet chemical tests : see table 2.*

Résultats d'analyses / *Test results* : Cf. pages suivantes / *Please refer to next pages.*

(1) Assays subcontracted in a SGS laboratory

(2) Assays subcontracted in a partner laboratory.

Abbreviations ME or MO described within the field "parameters" of this report mean "Internal method" (adapting from the reference text if described hereinafter)

The testing report only concerns materials or products submitted for assay. The duplication of this document is only authorized in its entirety without the written permission of the laboratory. The present report is issued by the company in accordance with its general conditions of services. (Copy available on request).

This document is issued by the Company subject to its General Conditions of Service available on request or accessible at <http://www.sgs.com/en/Terms-and-Conditions.aspx> and, for electronic format documents, subject to Terms and Conditions for Electronic Documents at <http://www.sgs.com/en/Terms-and-Conditions/Terms-e-Documents.aspx>

Attention is drawn to the limitation of liability, indemnification and jurisdiction and to the use of SGS and COFRAC brand-names issues defined therein. Any holder of this document is advised that information contained hereon reflects the Company's findings at the time of its intervention only and within the limits of Client's instructions, if any. The Company's sole responsibility is to its Client and this document does not exonerate parties to a transaction from exercising all their rights and obligations under the transaction documents. This document cannot be reproduced except in full, without prior written approval of the Company. Any unauthorized alteration, forgery or falsification of the content or appearance of this document is unlawful and offenders may be prosecuted to the fullest extent of the law.

Unless otherwise stated the results shown in this test report refer only to the sample(s) tested and such sample(s) are retained for 60 days only (indeed less depending on kind of sample(s)) or more than 60 days according to particular client's request.

WARNING: The sample(s) to which the findings recorded herein (the "Findings") relate was(were) drawn and / or provided by the Client or by a third party acting at the Client's direction. The Findings constitute no warranty of the sample's representativeness of any goods and strictly relate to the sample(s). The Company accepts no liability with regard to the origin or source from which the sample(s) is/are said to be extracted.

**Rapport d'essais** No. RN22-07517 Date : 07/12/2022 Page 2/26  
*Test Report*

**Conclusion :**

Basés sur les analyses effectuées sur les parties testées de l'échantillon et les informations fournies par le client, les résultats **sont conformes** aux seuils de la Directive RoHS 2011/65/UE et ses amendements (2015/863/UE) / *Based on the performed analyses on the tested parts of the submitted sample and the informations provided by client, results are in compliance with the RoHS Directive 2011/65/EU and its subsequent amendments (2015/863/EU).*

Du plomb a été détecté au-delà de la limite de 1000 mg/kg dans les échantillon testé RN22-07517.67 et RN22-07517.68. Des tests ont été réalisé sur une autre référence de connecteur (RN22-11714 gros connecteur) qui se sont révélés conformes aux limites de teneur en plomb selon la Directive RoHS 211/65/UE. Celui-ci va être équipé sur l'ensemble des produits suivant les information client Annexe II.

*Lead was detected above the limit of 1000 mg/kg in the samples tested RN22-07517.67 and RN22-07517.68. Tests were carried out on another connector reference (RN22-11714 large connector) which proved to comply with the lead content limits according to the RoHS Directive 211/65/EU. This one will be equipped on all the products based on the informations client Annex II.*

Du plomb a été détecté au-delà de la limite de 1000 mg/kg dans les échantillon testé RN22-07517.22/RN22-07517.43/RN22-07517.47/RN22-07517.91, des exemptions de l'annexe III encadrent ces parties d'après la déclaration du client et à la remise du rapport 22-01-QAC-124A du chargeur.

*Lead was detected above the limit of 1000 mg/kg in the samples tested RN22-07517.22/RN22-07517.43/ RN22-07517.47/RN22-07517.91. exemptions from annex III frame these parts according to the client's statement and submission of report 22-01-QAC-124A of the charger.*

Signé par et pour / *Signed for and on behalf of*  
 SGS France

Nom / *Name* : CHARDON Thomas

Titre / *Title* : Expert Technique

Tel : 0638244057

(1) Assays subcontracted in a SGS laboratory (2) Assays subcontracted in a partner laboratory.  
 Abbreviations ME or MO described within the field "parameters" of this report mean "Internal method" (adapting from the reference text if described hereinafter)  
 The testing report only concerns materials or products submitted for assay. The duplication of this document is only authorized in its entirety without the written permission of the laboratory. The present report is issued by the company in accordance with its general conditions of services. (Copy available on request).  
 This document is issued by the Company subject to its General Conditions of Service available on request or accessible at <http://www.sgs.com/en/Terms-and-Conditions.aspx> and, for electronic format documents, subject to Terms and Conditions for Electronic Documents at <http://www.sgs.com/en/Terms-and-Conditions/Terms-e-Documents.aspx>  
 Attention is drawn to the limitation of liability, indemnification and jurisdiction and to the use of SGS and COFRAC brand-names issues defined therein. Any holder of this document is advised that information contained hereon reflects the Company's findings at the time of its intervention only and within the limits of Client's instructions, if any. The Company's sole responsibility is to its Client and this document does not exonerate parties to a transaction from exercising all their rights and obligations under the transaction documents. This document cannot be reproduced except in full, without prior written approval of the Company. Any unauthorized alteration, forgery or falsification of the content or appearance of this document is unlawful and offenders may be prosecuted to the fullest extent of the law.  
 Unless otherwise stated the results shown in this test report refer only to the sample(s) tested and such sample(s) are retained for 60 days only (indeed less depending on kind of sample(s)) or more than 60 days according to particular client's request.  
 WARNING: The sample(s) to which the findings recorded herein (the "Findings") relate was(were) drawn and / or provided by the Client or by a third party acting at the Client's direction. The Findings constitute no warranty of the sample's representativeness of any goods and strictly relate to the sample(s). The Company accepts no liability with regard to the origin or source from which the sample(s) is/are said to be extracted.

**Rapport d'essais** No. RN22-07517 Date : 07/12/2022 Page 3/26  
*Test Report*

**1. Résultats XRF et analyses chimiques de confirmation / *XRF results and wet chemical tests***

No.	Reference SGS	Description échantillon / <i>Sample description</i>	Résultats / <i>Results</i> (α)					Paramètre COFRAC : <i>screening XRF COFRAC parameter : XRF screening</i> (*)
			Hg	Cd	Pb	CrVI	PBB/PBDE	
1	RN22-07517.001	grande vis à pointe en croix complément <i>large cross tip screw complement</i> (**)	IL	IL	IL	<LQ #	NA	
2	RN22-07517.002	cheville métallique complément <i>metal dowel complement</i>	IL	IL	IL	IL	NA	
3	RN22-07517.003	rêvetement métallique autour embout (chargeur) <i>metallic revert around tip (charger)</i>	IL	IL	IL	IL	NA	
4	RN22-07517.004	polymère protection de soudure embout/fil électrique (chargeur) <i>polymer weld protection tip/electric wire (charger)</i> (**)	IL	IL	IL	NR	IL	(*)
5	RN22-07517.005	polymère noir embout (chargeur) <i>black polymer tip (charger)</i> (**)	IL	IL	IL	IL	<LQ	(*)
6	RN22-07517.006	barre métallique embout (chargeur) <i>metal bar tip (charger)</i>	IL	IL	IL	IL	NA	
7	RN22-07517.007	soudure fil/embout (chargeur) <i>wire/tip welding (feeder)</i>	IL	IL	IL	IL	NA	
8	RN22-07517.008	fil électrique (chargeur) <i>electrical wire (charger)</i>	IL	IL	IL	IL	NA	
9	RN22-07517.009	gaine blanche fil électrique (chargeur) <i>white sheath electric wire (charger)</i>	IL	IL	IL	IL	IL	(*)
10	RN22-07517.010	gaine noire fil électrique (chargeur) <i>black sheath electric wire (charger)</i>	IL	IL	IL	IL	IL	(*)
11	RN22-07517.011	plastique mou noir compartiment gaine (chargeur) <i>soft plastic black sheath compartment (charger)</i>	IL	IL	IL	IL	IL	(*)
12	RN22-07517.012	plastique dur noir dans compartiment sur la gaine (chargeur) <i>black hard plastic in compartment on the sheath (charger)</i> (**)	IL	IL	IL	<LQ	IL	(*)
13	RN22-07517.013	couvercle protection (batterie) <i>protective cover (battery)</i>	IL	IL	IL	IL	IL	(*)
14	RN22-07517.014	papier noir (batterie) <i>black paper (battery)</i> (**)	IL	IL	IL	IL	<LQ	(*)
15	RN22-07517.015	colle composant carte électronique 1 (PCB1) (batterie) <i>glue component electronic board 1 (PCB1) (battery)</i>	IL	IL	IL	IL	IL	(*)
16	RN22-07517.016	composant rectangulaire D100 (PCB1) <i>rectangular component D100 (PCB1)</i>	IL	IL	IL	IL	NA	
17	RN22-07517.017	Revêtement caoutchouc sur composant (PCB1) <i>Rubber coating on component (PCB1)</i>	IL	IL	IL	IL	IL	(*)

(1) Assays subcontracted in a SGS laboratory (2) Assays subcontracted in a partner laboratory.  
Abbreviations ME or MO described within the field "parameters" of this report mean "Internal method" (adapting from the reference text if described hereinafter)  
The testing report only concerns materials or products submitted for assay. The duplication of this document is only authorized in its entirety without the written permission of the laboratory. The present report is issued by the company in accordance with its general conditions of services. (Copy available on request).  
This document is issued by the Company subject to its General Conditions of Service available on request or accessible at <http://www.sgs.com/en/Terms-and-Conditions.aspx> and, for electronic format documents, subject to Terms and Conditions for Electronic Documents at <http://www.sgs.com/en/Terms-and-Conditions/Terms-e-Document.aspx>  
Attention is drawn to the limitation of liability, indemnification and jurisdiction and to the use of SGS and COFRAC brand-names issues defined therein. Any holder of this document is advised that information contained hereon reflects the Company's findings at the time of its intervention only and within the limits of Client's instructions, if any. The Company's sole responsibility is to its Client and this document does not exonerate parties to a transaction from exercising all their rights and obligations under the transaction documents. This document cannot be reproduced except in full, without prior written approval of the Company. Any unauthorized alteration, forgery or falsification of the content or appearance of this document is unlawful and offenders may be prosecuted to the fullest extent of the law.  
Unless otherwise stated the results shown in this test report refer only to the sample(s) tested and such sample(s) are retained for 60 days only (indeed less depending on kind of sample(s)) or more than 60 days according to particular client's request.  
WARNING: The sample(s) to which the findings recorded herein (the "Findings") relate was(were) drawn and / or provided by the Client or by a third party acting at the Client's direction. The Findings constitute no warranty of the sample's representativeness of any goods and strictly relate to the sample(s). The Company accepts no liability with regard to the origin or source from which the sample(s) is/are said to be extracted.

**Rapport d'essais** No. RN22-07517 Date : 07/12/2022 Page 4/26  
*Test Report*

No.	Reference SGS	Description échantillon / <i>Sample description</i>	Résultats / <i>Results</i> (α)					Paramètre COFRAC : screening XRF <i>COFRAC parameter : XRF screening</i> (*)
			Hg	Cd	Pb	CrVI	PBB/PBDE	
18	RN22-07517.018	Revêtement métallique sur caoutchouc (PCB1) <i>Metal coating on rubber (PCB1) (**)</i>	IL	IL	IL	<LQ #	NA	
19	RN22-07517.019	grand composant cylindrique métallique C105 (PCB1) <i>large metal cylindrical component C105 (PCB1)</i>	IL	IL	IL	IL	NA	
20	RN22-07517.020	moyen composant cylindrique métallique C110 (PCB1) <i>medium metal cylindrical component C110 (PCB1)</i>	IL	IL	IL	IL	NA	
21	RN22-07517.021	petit composant cylindrique métallique C40 (PCB1) <i>small metal cylindrical component C40 (PCB1)</i>	IL	IL	IL	IL	NA	
22	RN22-07517.022	résistance Z0101 (PCB1) <i>resistance Z0101 (PCB1)</i>	IL	IL	▲	IL	NA	
23	RN22-07517.023	composant cylindrique horizontal (PCB1) <i>horizontal cylindrical component (PCB1)</i>	IL	IL	IL	IL	NA	
24	RN22-07517.024	composant sous cylindre horizontal J3 (PCB1) <i>horizontal sub-cylinder component J3</i>	IL	IL	IL	IL	IL	(*)
25	RN22-07517.025	composant B01 (PCB1) <i>Component B01 (PCB1)</i>	IL	IL	IL	IL	IL	(*)
26	RN22-07517.026	composant C5 (PCB1) <i>component C5 (PCB1)</i>	IL	IL	IL	IL	IL	(*)
27	RN22-07517.027	composant U2 (PCB1) <i>U2 component (PCB1) (**)</i>	IL	IL	IL	IL	<LQ	(*)
28	RN22-07517.028	composant bleu (PCB1) <i>blue component (PCB1)</i>	IL	IL	IL	IL	IL	(*)
29	RN22-07517.029	composant vert (PCB1) <i>green component (PCB1) (**)</i>	IL	IL	IL	NR	IL	(*)
30	RN22-07517.030	composant B (PCB1) <i>Component B (PCB1)</i>	IL	IL	IL	IL	IL	(*)
31	RN22-07517.031	composant A (PCB1) <i>Component A (PCB1) (**)</i>	IL	IL	IL	IL	<LQ	(*)
32	RN22-07517.032	composant bobine cuivre (PCB1) <i>copper coil component (PCB1)</i>	IL	IL	IL	IL	IL	(*)
33	RN22-07517.033	composant bleu relié par gaine rouge (PCB1) <i>blue component connected by red sheath (PCB1)</i>	IL	IL	IL	IL	IL	(*)
34	RN22-07517.034	gaine rouge (PCB1) <i>red sheath (PCB1)</i>	IL	IL	IL	IL	IL	(*)
35	RN22-07517.035	gaine noire enveloppant gaine rouge (PCB1) <i>black wraparound sheath red sheath (PCB1)</i>	IL	IL	IL	IL	IL	(*)
36	RN22-07517.036	revêtement noir sur composant bleu (PCB1) <i>black coating on blue component (PCB1)</i>	IL	IL	IL	IL	IL	(*)
37	RN22-07517.037	fil électrique gaine rouge (PCB1) <i>red sheath electrical wire (PCB1)</i>	IL	IL	IL	IL	NA	

(1) Assays subcontracted in a SGS laboratory (2) Assays subcontracted in a partner laboratory.  
Abbreviations ME or MO described within the field "parameters" of this report mean "Internal method" (adapting from the reference text if described hereinafter)  
The testing report only concerns materials or products submitted for assay. The duplication of this document is only authorized in its entirety without the written permission of the laboratory. The present report is issued by the company in accordance with its general conditions of services. (Copy available on request).  
This document is issued by the Company subject to its General Conditions of Service available on request or accessible at <http://www.sgs.com/en/Terms-and-Conditions.aspx> and, for electronic format documents, subject to Terms and Conditions for Electronic Documents at <http://www.sgs.com/en/Terms-and-Conditions/Terms-e-Documents.aspx>  
Attention is drawn to the limitation of liability, indemnification and jurisdiction and to the use of SGS and COFRAC brand-names issues defined therein. Any holder of this document is advised that information contained hereon reflects the Company's findings at the time of its intervention only and within the limits of Client's instructions, if any. The Company's sole responsibility is to its Client and this document does not exonerate parties to a transaction from exercising all their rights and obligations under the transaction documents. This document cannot be reproduced except in full, without prior written approval of the Company. Any unauthorized alteration, forgery or falsification of the content or appearance of this document is unlawful and offenders may be prosecuted to the fullest extent of the law.  
Unless otherwise stated the results shown in this test report refer only to the sample(s) tested and such sample(s) are retained for 60 days only (indeed less depending on kind of sample(s)) or more than 60 days according to particular client's request.  
WARNING: The sample(s) to which the findings recorded herein (the "Findings") relate was(were) drawn and / or provided by the Client or by a third party acting at the Client's direction. The Findings constitute no warranty of the sample's representativeness of any goods and strictly relate to the sample(s). The Company accepts no liability with regard to the origin or source from which the sample(s) is/are said to be extracted.

**Rapport d'essais** No. RN22-07517 Date : 07/12/2022 Page 5/26  
*Test Report*

No.	Reference SGS	Description échantillon / <i>Sample description</i>	Résultats / <i>Results</i> (α)					Paramètre COFRAC : screening XRF <i>COFRAC parameter : XRF screening</i> (*)
			Hg	Cd	Pb	CrVI	PBB/PBDE	
38	RN22-07517.038	composant Q1 (PCB1) <i>component Q1 (PCB1)</i>	IL	IL	IL	IL	IL	(*)
39	RN22-07517.039	composant J2 (PCB1) <i>component J2 (PCB1)</i>	IL	IL	IL	IL	IL	(*)
40	RN22-07517.040	composant R42 (PCB1) <i>component R42 (PCB1)</i>	IL	IL	IL	IL	IL	(*)
41	RN22-07517.041	composant jaune (PCB1) <i>yellow component (PCB1)</i> (**)	IL	IL	IL	IL	<LQ	(*)
42	RN22-07517.042	composant FS1 (PCB1) <i>FS1 component (PCB1)</i>	IL	IL	IL	IL	IL	(*)
43	RN22-07517.043	embout pour prise (batterie) <i>plug tip (battery)</i>	IL	IL	■	IL	NA	
44	RN22-07517.044	gaine noire reliant PCB1 à embour prise (batterie) <i>black sheath connecting PCB1 to socket (battery)</i>	IL	IL	IL	IL	IL	(*)
45	RN22-07517.045	gaine blanche reliant PCB1 à embour prise (batterie) <i>white sheath connecting PCB1 to socket (battery)</i>	IL	IL	IL	IL	IL	(*)
46	RN22-07517.046	petit composant marron partie verte (PCB1) <i>small component brown green part (PCB1)</i>	IL	IL	IL	IL	NA	
47	RN22-07517.047	petit composant noir partie verte PCB1) <i>small component black part green PCB1)</i>	IL	IL	▲	IL	IL	(*)
48	RN22-07517.048	puce électronique partie verte (PCB1) <i>green part electronic chip (PCB1)</i>	IL	IL	IL	IL	IL	(*)
49	RN22-07517.049	soudure carte (PCB1= <i>card welding (PCB1=</i>	IL	IL	IL	IL	NA	
50	RN22-07517.050	PCB1 <i>PCB1</i> (**)	IL	IL	IL	IL	<LQ	(*)
51	RN22-07517.051	vis boîtier <i>screw case</i>	IL	IL	IL	IL	NA	
52	RN22-07517.052	étiquette de consigne <i>set label</i>	IL	IL	IL	IL	IL	(*)
53	RN22-07517.053	polymère blanc boîtier <i>white polymer case</i> (**)	IL	IL	IL	IL	<LQ	(*)
54	RN22-07517.054	étiquette cache vis <i>screw cover label</i>	IL	IL	IL	IL	IL	(*)
55	RN22-07517.055	lumière rouge <i>red light</i> (**)	IL	IL	IL	IL	<LQ	(*)
56	RN22-07517.056	lumière verte <i>green light</i> (**)	IL	IL	IL	IL	<LQ	(*)
57	RN22-07517.057	polymère marron claire sur branchement boîtier <i>light brown polymer on box connection</i>	IL	IL	IL	IL	IL	(*)
58	RN22-07517.058	languette métallique dans branchement boîtier <i>metal tongue in box connection</i>	IL	IL	IL	IL	NA	
59	RN22-07517.059	polymère noire du branchement boîtier <i>black polymer of the box connection</i> (**)	IL	IL	IL	IL	<LQ	(*)
60	RN22-07517.060	embout branchement boîtier <i>tip connection box</i>	IL	IL	IL	IL	NA	

(1) Assays subcontracted in a SGS laboratory (2) Assays subcontracted in a partner laboratory.  
Abbreviations ME or MO described within the field "parameters" of this report mean "Internal method" (adapting from the reference text if described hereinafter)  
The testing report only concerns materials or products submitted for assay. The duplication of this document is only authorized in its entirety without the written permission of the laboratory. The present report is issued by the company in accordance with its general conditions of services. (Copy available on request).  
This document is issued by the Company subject to its General Conditions of Service available on request or accessible at <http://www.sgs.com/en/Terms-and-Conditions.aspx> and, for electronic format documents, subject to Terms and Conditions for Electronic Documents at <http://www.sgs.com/en/Terms-and-Conditions/Terms-e-Document.aspx>  
Attention is drawn to the limitation of liability, indemnification and jurisdiction and to the use of SGS and COFRAC brand-names issues defined therein. Any holder of this document is advised that information contained hereon reflects the Company's findings at the time of its intervention only and within the limits of Client's instructions, if any. The Company's sole responsibility is to its Client and this document does not exonerate parties to a transaction from exercising all their rights and obligations under the transaction documents. This document cannot be reproduced except in full, without prior written approval of the Company. Any unauthorized alteration, forgery or falsification of the content or appearance of this document is unlawful and offenders may be prosecuted to the fullest extent of the law.  
Unless otherwise stated the results shown in this test report refer only to the sample(s) tested and such sample(s) are retained for 60 days only (indeed less depending on kind of sample(s)) or more than 60 days according to particular client's request.  
WARNING: The sample(s) to which the findings recorded herein (the "Findings") relate was(were) drawn and / or provided by the Client or by a third party acting at the Client's direction. The Findings constitute no warranty of the sample's representativeness of any goods and strictly relate to the sample(s). The Company accepts no liability with regard to the origin or source from which the sample(s) is/are said to be extracted.



**Rapport d'essais** No. RN22-07517 Date : 07/12/2022 Page 6/26  
*Test Report*

No.	Reference SGS	Description échantillon / <i>Sample description</i>	Résultats / <i>Results</i> (α)					Paramètre COFRAC : screening XRF <i>COFRAC parameter : XRF screening</i> (*)	
			Hg	Cd	Pb	CrVI	PBB/ PBDE		
61	RN22-07517.061	écrou fixation branchement au boîtier <i>nut attachment connection to the case</i>	IL	IL	IL	IL	NA		
62	RN22-07517.062	résistance bleu (PCB2) <i>blue resistance (PCB2)</i>	IL	IL	IL	IL	IL	(*)	
63	RN22-07517.063	composant noir (PCB2) <i>black component (PCB2)</i> (**)	IL	IL	IL	IL	<LQ	(*)	
64	RN22-07517.064	composant rouge (PCB2) <i>red component (PCB2)</i>	IL	IL	▲	IL	NA		
65	RN22-07517.065	vis de fixation composant blanc (PCB2) <i>White component fixing screw (PCB2)</i> (**)	IL	IL	IL	<LQ #	NA		
66	RN22-07517.066	polymère composant blanc (PCB2) <i>white component polymer (PCB2)</i>	IL	IL	IL	IL	IL		
67	RN22-07517.067	métal carré pour vis (PCB2) <i>square metal for screws (PCB2)</i>	IL	IL	SL	IL	NA		
68	RN22-07517.068	languette métallique entre vis et carré métallique (PCB2) <i>metal tab between screws and metal square (PCB2)</i>	IL	IL	SL	IL	NA		
69	RN22-07517.069	PCB2 <i>PCB2</i> (**)	IL	IL	IL	IL	<LQ	(*)	
70	RN22-07517.070	gaine bleu entre PCB2, 3 et 4 <i>blue sheath between PCB2, 3 and 4</i>	IL	IL	IL	IL	IL	(*)	
71	RN22-07517.071	gaine rouge entre PCB2, 3 et 4 <i>red sheath between PCB2, 3 and 4</i>	IL	IL	IL	IL	IL	(*)	
72	RN22-07517.072	gaine noire entre PCB2, 3 et 4 <i>black sheath between PCB2, 3 and 4</i>	IL	IL	IL	IL	IL	(*)	
73	RN22-07517.073	fil électrique de cuivre dans la gaine <i>copper electrical wire in the sheath</i>	IL	IL	IL	IL	NA		
74	RN22-07517.074	bobine cuivre <i>copper coil</i>	IL	IL	IL	IL	NA		
75	RN22-07517.075	adhésif pour lier bobine cuivre <i>adhesive for binding copper coil</i>	IL	IL	IL	IL	IL	(*)	
76	RN22-07517.076	composant carré marron (PCB3) <i>brown square component (PCB3)</i> (**)	IL	IL	IL	IL	<LQ	(*)	
77	RN22-07517.077	composant cylindrique (PCB3) <i>cylindrical component (PCB3)</i>	IL	IL	IL	IL	IL	(*)	
78	RN22-07517.078	composant rectangulaire à 6 trous (PCB3) <i>6-hole rectangular component (PCB3)</i> (**)	IL	IL	IL	IL	<LQ	(*)	
79	RN22-07517.079	résistance beige (PCB3) <i>clear brown resistance (PCB3)</i>	IL	IL	IL	IL	IL	(*)	
80	RN22-07517.080	composant bleu (PCB3) <i>blue component (PCB3)</i>	IL	IL	IL	IL	IL	(*)	
81	RN22-07517.081	Mix of phthalates	Voir les résultats page / <i>See results on page</i> : 10						
82	RN22-07517.082	composant noir demi-cylindrique <i>semi-cylindrical black component</i> (**)	IL	IL	IL	IL	<LQ	(*)	
83	RN22-07517.083	PCB3 <i>PCB3</i> (**)	IL	IL	IL	IL	<LQ	(*)	
84	RN22-07517.084	composant carré marron (PCB4) <i>brown square component (PCB4)</i> (**)	IL	IL	IL	IL	<LQ	(*)	

(1) Assays subcontracted in a SGS laboratory (2) Assays subcontracted in a partner laboratory.  
Abbreviations ME or MO described within the field "parameters" of this report mean "Internal method" (adapting from the reference text if described hereinafter)  
The testing report only concerns materials or products submitted for assay. The duplication of this document is only authorized in its entirety without the written permission of the laboratory. The present report is issued by the company in accordance with its general conditions of services. (Copy available on request).  
This document is issued by the Company subject to its General Conditions of Service available on request or accessible at <http://www.sgs.com/en/Terms-and-Conditions.aspx> and, for electronic format documents, subject to Terms and Conditions for Electronic Documents at <http://www.sgs.com/en/Terms-and-Conditions/Terms-e-Document.aspx>  
Attention is drawn to the limitation of liability, indemnification and jurisdiction and to the use of SGS and COFRAC brand-names issues defined therein. Any holder of this document is advised that information contained hereon reflects the Company's findings at the time of its intervention only and within the limits of Client's instructions, if any. The Company's sole responsibility is to its Client and this document does not exonerate parties to a transaction from exercising all their rights and obligations under the transaction documents. This document cannot be reproduced except in full, without prior written approval of the Company. Any unauthorized alteration, forgery or falsification of the content or appearance of this document is unlawful and offenders may be prosecuted to the fullest extent of the law.  
Unless otherwise stated the results shown in this test report refer only to the sample(s) tested and such sample(s) are retained for 60 days only (indeed less depending on kind of sample(s)) or more than 60 days according to particular client's request.  
WARNING: The sample(s) to which the findings recorded herein (the "Findings") relate was(were) drawn and / or provided by the Client or by a third party acting at the Client's direction. The Findings constitute no warranty of the sample's representativeness of any goods and strictly relate to the sample(s). The Company accepts no liability with regard to the origin or source from which the sample(s) is/are said to be extracted.

**Rapport d'essais** No. RN22-07517 Date : 07/12/2022 Page 7/26  
*Test Report*

No.	Reference SGS	Description échantillon / <i>Sample description</i>	Résultats / <i>Results</i> (α)					Paramètre COFRAC : screening XRF <i>COFRAC parameter : XRF screening</i> (*)
			Hg	Cd	Pb	CrVI	PBB/PBDE	
85	RN22-07517.085	composant cylindrique (PCB4) <i>cylindrical component (PCB4)</i>	IL	IL	IL	IL	IL	(*)
86	RN22-07517.086	composant orange (PCB4) <i>orange component (PCB4)</i>	IL	IL	IL	IL	IL	(*)
87	RN22-07517.087	composant jaune (PCB4) <i>yellow component (PCB4)</i>	IL	IL	IL	IL	IL	(*)
88	RN22-07517.088	résistance beige (PCB4) <i>beige resistance (PCB4)</i>	IL	IL	IL	IL	IL	(*)
89	RN22-07517.089	résistance bleue (PCB4) <i>blue resistance (PCB4)</i>	IL	IL	IL	IL	IL	(*)
90	RN22-07517.090	composant demi-cylindrique (PCB4) <i>half-cylindrical component (PCB4)</i> (**)	IL	IL	IL	IL	<LQ	(*)
91	RN22-07517.091	composant rouge (PCB4) <i>red component (PCB4)</i>	IL	IL	▲	IL	NA	
92	RN22-07517.092	composant noir et métallique (PCB4) <i>black and metallic component (PCB4)</i>	IL	IL	IL	IL	NA	
93	RN22-07517.093	composant noir avec trou (PCB4) <i>black component with hole (PCB4)</i> (**)	IL	IL	IL	IL	<LQ	(*)
94	RN22-07517.094	composant cylindrique marron (PCB4) <i>brown cylinder component (PCB4)</i>	IL	IL	IL	IL	IL	(*)
95	RN22-07517.095	grande résistance bleue (PCB4) <i>high blue resistance (PCB4)</i>	IL	IL	IL	IL	IL	(*)
96	RN22-07517.096	composant métallique Q1 (PCB4) <i>metal component Q1 (PCB4)</i>	IL	IL	IL	IL	NA	
97	RN22-07517.097	composant rectangulaire (PCB4) <i>rectangular component (PCB4)</i> (**)	IL	IL	IL	IL	<LQ	(*)
98	RN22-07517.098	résistance marron (PCB4) <i>brown resistance (PCB4)</i>	IL	IL	IL	IL	IL	(*)
99	RN22-07517.099	composant bleu carré (PCB4) <i>square blue component (PCB4)</i> (**)	IL	IL	IL	IL	<LQ	(*)
100	RN22-07517.100	composant noir carré (PCB4) <i>square black component (PCB4)</i> (**)	IL	IL	IL	IL	<LQ	(*)
101	RN22-07517.101	adhésif de fixation cuivre du boîtier <i>copper fastening adhesive of the case</i>	IL	IL	IL	IL	IL	(*)
102	RN22-07517.102	PCB4 <i>PCB4</i> (**)	IL	IL	IL	IL	<LQ	(*)
103	RN22-07517.103	résistance beige (PCB3) <i>beige resistance (PCB3)</i>	IL	IL	IL	IL	IL	(*)

(1) Assays subcontracted in a SGS laboratory (2) Assays subcontracted in a partner laboratory.  
Abbreviations ME or MO described within the field "parameters" of this report mean "internal method" (adapting from the reference text if described hereinafter)  
The testing report only concerns materials or products submitted for assay. The duplication of this document is only authorized in its entirety without the written permission of the laboratory. The present report is issued by the company in accordance with its general conditions of services. (Copy available on request).  
This document is issued by the Company subject to its General Conditions of Service available on request or accessible at <http://www.sgs.com/en/Terms-and-Conditions.aspx> and, for electronic format documents, subject to Terms and Conditions for Electronic Documents at <http://www.sgs.com/en/Terms-and-Conditions/Terms-e-Documents.aspx>  
Attention is drawn to the limitation of liability, indemnification and jurisdiction and to the use of SGS and COFRAC brand-names issues defined therein. Any holder of this document is advised that information contained hereon reflects the Company's findings at the time of its intervention only and within the limits of Client's instructions, if any. The Company's sole responsibility is to its Client and this document does not exonerate parties to a transaction from exercising all their rights and obligations under the transaction documents. This document cannot be reproduced except in full, without prior written approval of the Company. Any unauthorized alteration, forgery or falsification of the content or appearance of this document is unlawful and offenders may be prosecuted to the fullest extent of the law.  
Unless otherwise stated the results shown in this test report refer only to the sample(s) tested and such sample(s) are retained for 60 days only (indeed less depending on kind of sample(s)) or more than 60 days according to particular client's request.  
WARNING: The sample(s) to which the findings recorded herein (the "Findings") relate was(were) drawn and / or provided by the Client or by a third party acting at the Client's direction. The Findings constitute no warranty of the sample's representativeness of any goods and strictly relate to the sample(s). The Company accepts no liability with regard to the origin or source from which the sample(s) is/are said to be extracted.

**Rapport d'essais** No. RN22-07517 Date : 07/12/2022 Page 8/26  
*Test Report*

No.	Reference SGS	Description échantillon / <i>Sample description</i>	Résultats / <i>Results</i> (α)					Paramètre COFRAC : screening XRF <i>COFRAC parameter : XRF screening</i> (*)
			Hg	Cd	Pb	CrVI	PBB/ PBDE	
1	RN22-11714.1	métal extérieur gros connecteur / <i>outdoor metal big connector</i>	IL	IL	IL	IL	NA	
2	RN22-11714.2	écrou métallique gros connecteur / <i>big connector metal nut</i>	IL	IL	IL	IL	NA	
3	RN22-11714.3	patte de connexion métallique intérieur gros connecteur / <i>interior metal connection leg large connector</i>	IL	IL	IL	IL	NA	
4	RN22-11714.4	polymère dur noir intérieur gros connecteur / <i>inner black hard polymer big connector</i> (**)	IL	IL	IL	IL	<LQ	(*)
5	RN22-11714.5	tige métallique centrale gros connecteur / <i>central metal rod big connector</i>	IL	IL	IL	IL	NA	
8	RN22-11714.8	rondelle métallique sous écrou / <i>metal washer under nut</i>	IL	IL	IL	IL	NA	
9	RN22-11714.9	polymère noir intérieur petit connecteur / <i>inner black polymer small connector</i> (**)	IL	IL	IL	IL	<LQ	(*)
10	RN22-11714.10	pâte de connexion métallique 1 branche / <i>metal connection paste 1 branch</i>	IL	IL	IL	IL	NA	
11	RN22-11714.11	pâte de connexion métallique 2 branches / <i>2-branch metal connection paste</i>	IL	IL	IL	IL	NA	
12	RN22-11714.12	rondelle polymère dur blanc entre les pattes de connexion / <i>white hard polymer washer between the connection pins</i> (**)	IL	IL	IL	IL	<LQ	(*)

Remarque (α) / *Remark (α)* : Les résultats ont été obtenus par un screening préliminaire par XRF. D'après le tableau 1 ci-dessous des analyses supplémentaires par ICP (pour les éléments Cd, Pb, Hg), UV-VIS (pour le CrVI) et GC/MS (pour les PBB, PBDE) doivent être effectuées si le résultat XRF est dans l'intervalle défini comme à confirmer (X). Des analyses supplémentaires peuvent également être proposées lorsque le résultat est Supérieur à la Limite (SL) dans le but d'obtenir un résultat chiffré à comparer avec les limites définies dans la Directive RoHS 2011/65/UE / *Results was obtained by EDXRF for primary screening. According the table 1 below, further wet chemical testing by ICP (for Cd, Pb, Hg), UV-VIS (for CrVI) and GCMSD (for PBBs, PBDEs) have to be performed, if the XRF results is in the range defined as inconclusive (X). Further wet chemical testing could also be proposed when results are over limit (OL) in order to have a numeral result to compare to the limits set by the RoHS Directive 2011/65/EU.*

(1) Assays subcontracted in a SGS laboratory

(2) Assays subcontracted in a partner laboratory.

Abbreviations ME or MO described within the field "parameters" of this report mean "Internal method" (adapting from the reference text if described hereinafter)

The testing report only concerns materials or products submitted for assay. The duplication of this document is only authorized in its entirety without the written permission of the laboratory. The present report is issued by the company in accordance with its general conditions of services. (Copy available on request).

This document is issued by the Company subject to its General Conditions of Service available on request or accessible at <http://www.sgs.com/en/Terms-and-Conditions.aspx> and, for electronic format documents, subject to Terms and Conditions for Electronic Documents at <http://www.sgs.com/en/Terms-and-Conditions/Terms-e-Document.aspx>

Attention is drawn to the limitation of liability, indemnification and jurisdiction and to the use of SGS and COFRAC brand-names issues defined therein. Any holder of this document is advised that information contained hereon reflects the Company's findings at the time of its intervention only and within the limits of Client's instructions, if any. The Company's sole responsibility is to its Client and this document does not exonerate parties to a transaction from exercising all their rights and obligations under the transaction documents. This document cannot be reproduced except in full, without prior written approval of the Company. Any unauthorized alteration, forgery or falsification of the content or appearance of this document is unlawful and offenders may be prosecuted to the fullest extent of the law.

Unless otherwise stated the results shown in this test report refer only to the sample(s) tested and such sample(s) are retained for 60 days only (indeed less depending on kind of sample(s)) or more than 60 days according to particular client's request.

WARNING: The sample(s) to which the findings recorded herein (the "Findings") relate was(were) drawn and / or provided by the Client or by a third party acting at the Client's direction. The Findings constitute no warranty of the sample's representativeness of any goods and strictly relate to the sample(s). The Company accepts no liability with regard to the origin or source from which the sample(s) is/are said to be extracted.



**Rapport d'essais** No. RN22-07517 Date : 07/12/2022 Page 9/26  
*Test Report*

Notes:

IL = Inférieur à la valeur limite réglementaire par l'analyse XRF (résultat basé sur le Chrome total pour le chrome VI et sur le Brome total pour les PBBs, PBDEs) / *Lower than the regulatory limit by XRF analysis (result based on total chromium content for chromium VI and total bromine content for PBBs, PBDEs).*

SL = Supérieur à la valeur limite réglementaire par l'analyse XRF / *Higher than the regulatory limit by XRF analysis.*

NA = Non Applicable / *Not applicable*

NR = Non Réalisable / *Not feasible*

mg/kg = ppm ; 0.1% m/m = 1000ppm

LQ = Limite de quantification / *Method Quantification Limit*

§ = La limite de quantification a été rehaussée mais reste néanmoins inférieur au seuil réglementaire. *The quantification limit has been raised but nevertheless remains below the regulatory limit.*

(\*) Le test de screening XRF (**matrice polymère uniquement**) est couvert par l'accréditation selon la norme NF EN ISO/CEI 17025 et les règles d'application du Cofrac (Portée d'accréditation disponibles sur demande). *The XRF screening (polymer matrix ONLY) is covered by the accreditation according to the standard NF EN ISO/CEI 17025 and application rules about Cofrac (Scope can be delivered upon request).*

(\*\*) Le résultat XRF pour à minima l'un des éléments était « A confirmer », soit pas de conclusion possible. Une analyse chimique a été réalisée. Les méthodes utilisées sont indiquées dans le tableau 2 ci-dessous / *XRF result was « inconclusive » for one element at least, it means questionable. Then wet chemical test was performed. Used methods are indicated in the table 2 below*

■ Selon la déclaration fournie par le client, le plomb (Pb) dans l'échantillon testé RNxx- xxx est exempté par la directive RoHS 2011/65/UE basé sur [ANNEXE III 6(c)]: L'alliage de cuivre contenant jusqu'à 4 % de plomb en poids / *According to the declaration from the client, Lead (Pb) in tested sample RNxx-xxx is exempted by EU RoHS directive 2011/65/EU based on [ANNEX III 6(c)]: Copper alloy containing up to 4 % lead by weight.*

▲ Selon la déclaration fournie par le client, le plomb (Pb) dans l'échantillon testé RNxx- xxx est exempté par la directive RoHS 2011/65/UE basé sur [ANNEXE III 7(c-l)] : Les composants électriques et électroniques contenant du plomb dans du verre ou des matériaux céramiques autres que les céramiques diélectriques dans les condensateurs (par exemple, les dispositifs piézoélectriques) ou dans une matrice en verre ou en céramique). *According to the declaration from the client, Lead (Pb) in tested sample RNxx-xxx is exempted by EU RoHS directive 2011/65/EU based on [ANNEX III 7(c)] : Electrical and electronic components containing lead in a glass or ceramic other than dielectric ceramic in capacitors, e.g. piezoelectronic devices, or in glass or ceramic matrix compound*

# Le traitement de surface ne pouvant être séparé du métal, l'analyse a porté sur le métal plus le revêtement / *The surface treatment can't be separated from the metal, the analysis was carried out on the metal plus the coating*

L'échantillon est négatif au chrome hexavalent – La concentration en chrome hexavalent est inférieure à la limite de quantification. Le revêtement est considéré comme non basé sur du chrome hexavalent

L'échantillon est négatif au chrome hexavalent en se basant uniquement sur une comparaison visuelle. Aucun mesurage colorimétrique n'a été effectué / *The sample is negative for CrVI if CrVI is <MQL (concentration less than 0.10 µg/cm²). The coating is considered as a non CrVI-based coating*

*The sample is negative for Cr(VI) based on visual comparison only. No colorimetric measurement was performed*

(1) Assays subcontracted in a SGS laboratory

(2) Assays subcontracted in a partner laboratory.

Abbreviations ME or MO described within the field "parameters" of this report mean "Internal method" (adapting from the reference text if described hereinafter)

The testing report only concerns materials or products submitted for assay. The duplication of this document is only authorized in its entirety without the written permission of the laboratory. The present report is issued by the company in accordance with its general conditions of services. (Copy available on request).

This document is issued by the Company subject to its General Conditions of Service available on request or accessible at <http://www.sgs.com/en/Terms-and-Conditions.aspx> and, for electronic format documents, subject to Terms and Conditions for Electronic Documents at <http://www.sgs.com/en/Terms-and-Conditions/Terms-e-Document.aspx>

Attention is drawn to the limitation of liability, indemnification and jurisdiction and to the use of SGS and COFRAC brand-names issues defined therein. Any holder of this document is advised that information contained hereon reflects the Company's findings at the time of its intervention only and within the limits of Client's instructions, if any. The Company's sole responsibility is to its Client and this document does not exonerate parties to a transaction from exercising all their rights and obligations under the transaction documents. This document cannot be reproduced except in full, without prior written approval of the Company. Any unauthorized alteration, forgery or falsification of the content or appearance of this document is unlawful and offenders may be prosecuted to the fullest extent of the law.

Unless otherwise stated the results shown in this test report refer only to the sample(s) tested and such sample(s) are retained for 60 days only (indeed less depending on kind of sample(s)) or more than 60 days according to particular client's request.

WARNING: The sample(s) to which the findings recorded herein (the "Findings") relate was(were) drawn and / or provided by the Client or by a third party acting at the Client's direction. The Findings constitute no warranty of the sample's representativeness of any goods and strictly relate to the sample(s). The Company accepts no liability with regard to the origin or source from which the sample(s) is/are said to be extracted.

**Rapport d'essais** No. RN22-07517 Date : 07/12/2022 Page 10/26  
*Test Report*

<b>Elément / Element</b>	<b>Matériaux Polymériques / Polymer Materials</b>	<b>Matériaux Métalliques / Metallic Materials</b>	<b>Matériaux Composites / Composite Materials</b>
Cd	$IL \leq (70-3\sigma) < X < (130+3\sigma) \leq SL$	$IL \leq (70-3\sigma) < X < (130+3\sigma) \leq SL$	$LD < X < (150+3\sigma) \leq SL$
Pb	$IL \leq (700-3\sigma) < X < (1300+3\sigma) \leq SL$	$IL \leq (700-3\sigma) < X < (1300+3\sigma) \leq SL$	$IL \leq (500-3\sigma) < X < (1500+3\sigma) \leq SL$
Hg	$IL \leq (700-3\sigma) < X < (1300+3\sigma) \leq SL$	$IL \leq (700-3\sigma) < X < (1300+3\sigma) \leq SL$	$IL \leq (500-3\sigma) < X < (1500+3\sigma) \leq SL$
Br	$IL \leq (300-3\sigma) < X$	NA	$IL \leq (250-3\sigma) < X$
Cr	$IL \leq (700-3\sigma) < X$	$IL \leq (700-3\sigma) < X$	$IL \leq (500-3\sigma) < X$

**Tableau 1 :** Tableau d'interprétation des résultats XRF (Norme IEC 62321-3-1) (Unité : mg/kg) / *Table for interpretation of EDXRF results (Standard IEC 62321-3-1) (Unit : mg/kg)*

<b>Elément / Element</b>	<b>Matériaux Polymériques / Polymer Materials</b>	<b>Matériaux Métalliques / Metallic Materials</b>	<b>Matériaux Composites / Composite Materials</b>
Cd	IEC 62321-5 (ICP-AES)	IEC 62321-5 (ICP-AES)	IEC 62321-5 (ICP-AES)
Pb	IEC 62321-5 (ICP-AES)	IEC 62321-5 (ICP-AES)	IEC 62321-5 (ICP-AES)
Hg	IEC 62321-4 (ICP-AES)	IEC 62321-4 (ICP-AES)	IEC 62321-4 (ICP-AES)
Cr VI	MO341 (UV-VIS)	MO342 (UV-VIS)	MO342(UV-VIS)
PBB PBDE	ME310 (GC/MS)	NA	ME310 (GC/MS)

**Tableau 2 :** Méthodes d'analyses pour les confirmations chimiques / *Method for wet chemical tests*

Les limites de quantification (LQ) de chaque élément ainsi que les substances comprises dans l'analyse des PBB PBDE sont détaillées en annexe pour chaque type de matériaux / *Method Quantification Limit (MQL) for each element as well as included substances in PBB PBDE analysis are detailed in appendix for each type of materials.*

(1) Assays subcontracted in a SGS laboratory

(2) Assays subcontracted in a partner laboratory.

Abbreviations ME or MO described within the field "parameters" of this report mean "Internal method" (adapting from the reference text if described hereinafter)

The testing report only concerns materials or products submitted for assay. The duplication of this document is only authorized in its entirety without the written permission of the laboratory. The present report is issued by the company in accordance with its general conditions of services. (Copy available on request).

This document is issued by the Company subject to its General Conditions of Service available on request or accessible at <http://www.sgs.com/en/Terms-and-Conditions.aspx> and, for electronic format documents, subject to Terms and Conditions for Electronic Documents at <http://www.sgs.com/en/Terms-and-Conditions/Terms-e-Documents.aspx>

Attention is drawn to the limitation of liability, indemnification and jurisdiction and to the use of SGS and COFRAC brand-names issues defined therein. Any holder of this document is advised that information contained hereon reflects the Company's findings at the time of its intervention only and within the limits of Client's instructions, if any. The Company's sole responsibility is to its Client and this document does not exonerate parties to a transaction from exercising all their rights and obligations under the transaction documents. This document cannot be reproduced except in full, without prior written approval of the Company. Any unauthorized alteration, forgery or falsification of the content or appearance of this document is unlawful and offenders may be prosecuted to the fullest extent of the law.

Unless otherwise stated the results shown in this test report refer only to the sample(s) tested and such sample(s) are retained for 60 days only (indeed less depending on kind of sample(s)) or more than 60 days according to particular client's request.

WARNING: The sample(s) to which the findings recorded herein (the "Findings") relate was(were) drawn and / or provided by the Client or by a third party acting at the Client's direction. The Findings constitute no warranty of the sample's representativeness of any goods and strictly relate to the sample(s). The Company accepts no liability with regard to the origin or source from which the sample(s) is/are said to be extracted.

**Rapport d'essais** No. RN22-07517 Date : 07/12/2022 Page 11/26  
*Test Report*

**2. Résultats PHTALATES / PHTHALATES Results :**

**2.1 Mixe plastique**

Identification de l'échantillon / *Sample ID* : RN22-07517.81

Description de l'échantillon (détails des parties analysées) / *Sample description (details of the tested items)* :

Mixe plastique / *plastic mix*

Paramètres / <i>Parameters</i>	Unité / <i>Unit</i>	Méthode / <i>Method</i>	RN22-07517.81	LQ / <i>MQL</i>	Spécifications / <i>Limits</i>
Dibutyl Phthalate (DBP) (CAS 84-74-2)	mg/kg	ME-0403 (GC/MS)	<LQ / < <i>MQL</i>	10	1000
Benzylbutyl Phthalate (BBP) (CAS 85-68-7)	mg/kg	ME-0403 (GC/MS)	<LQ / < <i>MQL</i>	10	1000
Bis-(2-ethylhexyl) Phthalate (DEHP) (CAS 117-81-7)	mg/kg	ME-0403 (GC/MS)	25500 mg/kg	10	1000
Diisobutyl phthalate (DIBP) (CAS 84-69-5)	mg/kg	ME-0403 (GC/MS)	<LQ / < <i>MQL</i>	10	1000

mg/kg = ppm ; 0.1% m/m = 1000ppm

LQ = Limite de quantification / *MQL = Method Quantification Limit*

**2.2 Test individuel DEHP**

Identification de l'échantillon / *Sample ID* : RN22-12771

Description de l'échantillon (détails des parties analysées) / *Sample description (details of the tested items)* :

Voir photo / *cf. pictures*

Référence SGS	Unité / <i>Unit</i>	Méthode / <i>Method</i>	Valeur	LQ / <i>MQL</i>	Spécifications / <i>Limits</i>
RN22-12771.001	mg/kg	ME-0403 (GC/MS)	<LQ / < <i>MQL</i>	10	1000
RN22-12771.002	mg/kg	ME-0403 (GC/MS)	<LQ / < <i>MQL</i>	10	1000
RN22-12771.003	mg/kg	ME-0403 (GC/MS)	<b>340</b>	10	1000
RN22-12771.004	mg/kg	ME-0403 (GC/MS)	<b>294</b>	10	1000
RN22-12771.005	mg/kg	ME-0403 (GC/MS)	<b>154</b>	10	1000
RN22-12771.006	mg/kg	ME-0403 (GC/MS)	<b>172</b>	10	1000
RN22-12771.007	mg/kg	ME-0403 (GC/MS)	<b>115</b>	10	1000
RN22-12771.008	mg/kg	ME-0403 (GC/MS)	<LQ / < <i>MQL</i>	10	1000
RN22-12771.009	mg/kg	ME-0403 (GC/MS)	<LQ / < <i>MQL</i>	10	1000
RN22-12771.0010	mg/kg	ME-0403 (GC/MS)	<LQ / < <i>MQL</i>	10	1000
RN22-12771.0011	mg/kg	ME-0403 (GC/MS)	<LQ / < <i>MQL</i>	10	1000

(1) Assays subcontracted in a SGS laboratory

(2) Assays subcontracted in a partner laboratory.

Abbreviations ME or MO described within the field "parameters" of this report mean "Internal method" (adapting from the reference text if described hereinafter)

The testing report only concerns materials or products submitted for assay. The duplication of this document is only authorized in its entirety without the written permission of the laboratory. The present report is issued by the company in accordance with its general conditions of services. (Copy available on request).

This document is issued by the Company subject to its General Conditions of Service available on request or accessible at <http://www.sgs.com/en/Terms-and-Conditions.aspx> and, for electronic format documents, subject to Terms and Conditions for Electronic Documents at <http://www.sgs.com/en/Terms-and-Conditions/Terms-e-Documents.aspx>

Attention is drawn to the limitation of liability, indemnification and jurisdiction and to the use of SGS and COFRAC brand-names issues defined therein. Any holder of this document is advised that information contained hereon reflects the Company's findings at the time of its intervention only and within the limits of Client's instructions, if any. The Company's sole responsibility is to its Client and this document does not exonerate parties to a transaction from exercising all their rights and obligations under the transaction documents. This document cannot be reproduced except in full, without prior written approval of the Company. Any unauthorized alteration, forgery or falsification of the content or appearance of this document is unlawful and offenders may be prosecuted to the fullest extent of the law.

Unless otherwise stated the results shown in this test report refer only to the sample(s) tested and such sample(s) are retained for 60 days only (indeed less depending on kind of sample(s)) or more than 60 days according to particular client's request.

WARNING: The sample(s) to which the findings recorded herein (the "Findings") relate was(were) drawn and / or provided by the Client or by a third party acting at the Client's direction. The Findings constitute no warranty of the sample's representativeness of any goods and strictly relate to the sample(s). The Company accepts no liability with regard to the origin or source from which the sample(s) is/are said to be extracted.

**Rapport d'essais** No. RN22-07517 Date : 07/12/2022 Page 12/26  
*Test Report*

<b>Références SGS</b> <i>SGS references</i>	<b>Description</b> <i>Description</i>	<b>Correspondance RN22-07517</b> <i>Correspondence RN22-07517</i>
RN22-12771.001	Gaine Rouge	RN22-07517.034
RN22-12771.002	Gaine noire enveloppant gaine rouge	RN22-07575.035
RN22-12771.003	Gaine blanche fil électrique (RN22-07517.009)	RN22-07575.009
RN22-12771.004	Gaine noire fil électrique	RN22-07575.010
RN22-12771.005	Gaine noire reliant PCB1 à embour prise (batterie)	RN22-07575.044
RN22-12771.006	Gaine blanche reliant PCB1 à embour prise (batterie) (RN22-07517.045)	RN22-07575.045
RN22-12771.007	Plastique mou noir compartiment gaine (chargeur)	RN22-07575.011
RN22-12771.008	papier noir (batterie)	RN22-07575.014
RN22-12771.009	Colle composant carte électronique 1 (PCB1) (batterie)	RN22-07575.015
RN22-12771.0010	Revêtement caoutchouc sur composant (PCB1)	RN22-07575.017
RN22-12771.0011	Revêtement noir sur composant bleu (PCB1)	RN22-07575.036

**Tableau 3** : Description des échantillons analyser pour le test en individuel du DEHP/ *description of the samples to be analyzed for the individual DEHP test*

(1) Assays subcontracted in a SGS laboratory (2) Assays subcontracted in a partner laboratory.  
Abbreviations ME or MO described within the field "parameters" of this report mean "Internal method" (adapting from the reference text if described hereinafter)  
The testing report only concerns materials or products submitted for assay. The duplication of this document is only authorized in its entirety without the written permission of the laboratory. The present report is issued by the company in accordance with its general conditions of services. (Copy available on request).  
This document is issued by the Company subject to its General Conditions of Service available on request or accessible at <http://www.sgs.com/en/Terms-and-Conditions.aspx> and, for electronic format documents, subject to Terms and Conditions for Electronic Documents at <http://www.sgs.com/en/Terms-and-Conditions/Terms-e-Document.aspx>  
Attention is drawn to the limitation of liability, indemnification and jurisdiction and to the use of SGS and COFRAC brand-names issues defined therein. Any holder of this document is advised that information contained hereon reflects the Company's findings at the time of its intervention only and within the limits of Client's instructions, if any. The Company's sole responsibility is to its Client and this document does not exonerate parties to a transaction from exercising all their rights and obligations under the transaction documents. This document cannot be reproduced except in full, without prior written approval of the Company. Any unauthorized alteration, forgery or falsification of the content or appearance of this document is unlawful and offenders may be prosecuted to the fullest extent of the law.  
Unless otherwise stated the results shown in this test report refer only to the sample(s) tested and such sample(s) are retained for 60 days only (indeed less depending on kind of sample(s)) or more than 60 days according to particular client's request.  
WARNING: The sample(s) to which the findings recorded herein (the "Findings") relate was(were) drawn and / or provided by the Client or by a third party acting at the Client's direction. The Findings constitute no warranty of the sample's representativeness of any goods and strictly relate to the sample(s). The Company accepts no liability with regard to the origin or source from which the sample(s) is/are said to be extracted.

**Rapport d'essais** No. RN22-07517 Date : 07/12/2022 Page 13/26  
*Test Report*

Photo échantillon / [Sample photo](#) :



(1) Assays subcontracted in a SGS laboratory

(2) Assays subcontracted in a partner laboratory.

Abbreviations ME or MO described within the field "parameters" of this report mean "Internal method" (adapting from the reference text if described hereinafter)

The testing report only concerns materials or products submitted for assay. The duplication of this document is only authorized in its entirety without the written permission of the laboratory. The present report is issued by the company in accordance with its general conditions of services. (Copy available on request).

This document is issued by the Company subject to its General Conditions of Service available on request or accessible at <http://www.sgs.com/en/Terms-and-Conditions.aspx> and, for electronic format documents, subject to Terms and Conditions for Electronic Documents at <http://www.sgs.com/en/Terms-and-Conditions/Terms-e-Document.aspx>

Attention is drawn to the limitation of liability, indemnification and jurisdiction and to the use of SGS and COFRAC brand-names issues defined therein. Any holder of this document is advised that information contained hereon reflects the Company's findings at the time of its intervention only and within the limits of Client's instructions, if any. The Company's sole responsibility is to its Client and this document does not exonerate parties to a transaction from exercising all their rights and obligations under the transaction documents. This document cannot be reproduced except in full, without prior written approval of the Company. Any unauthorized alteration, forgery or falsification of the content or appearance of this document is unlawful and offenders may be prosecuted to the fullest extent of the law.

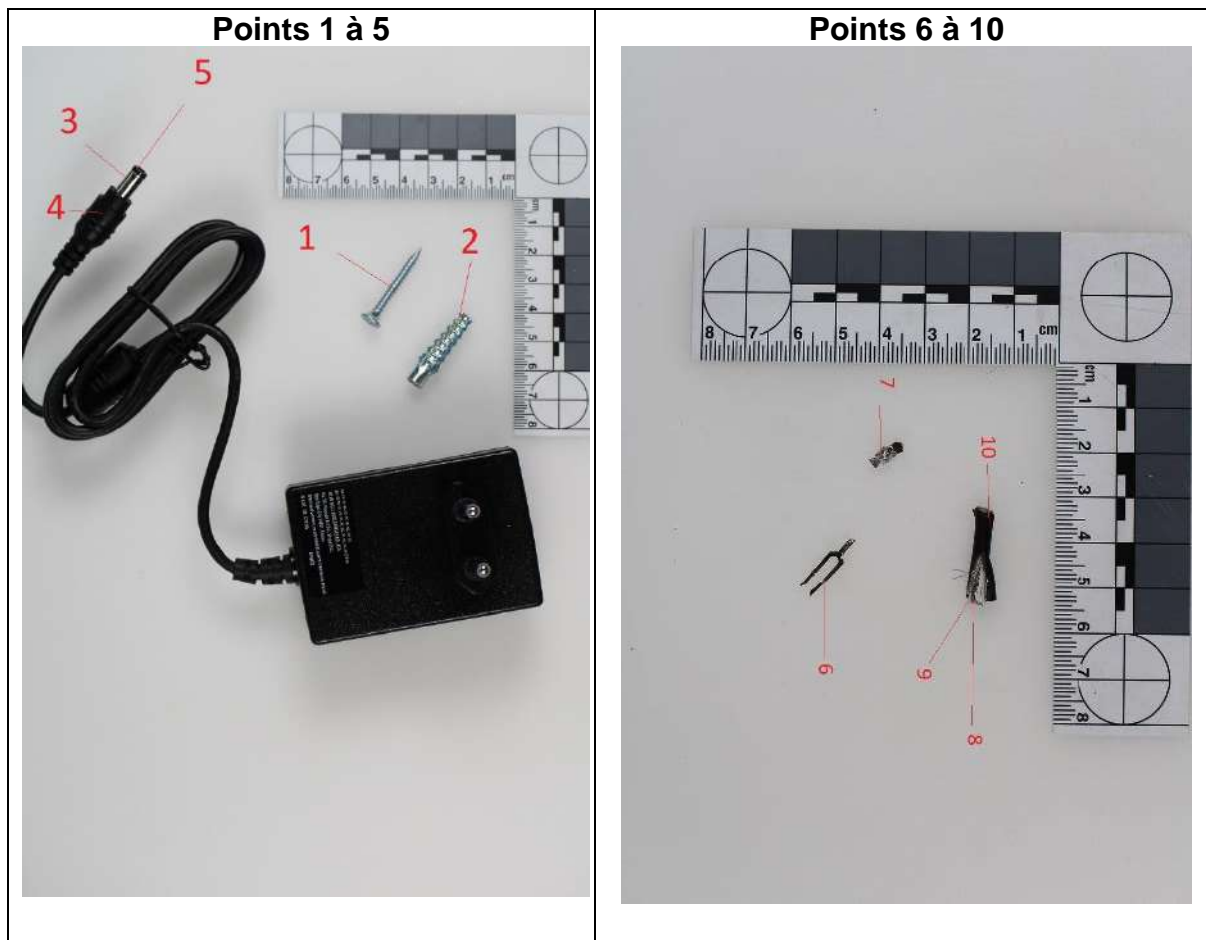
Unless otherwise stated the results shown in this test report refer only to the sample(s) tested and such sample(s) are retained for 60 days only (indeed less depending on kind of sample(s)) or more than 60 days according to particular client's request.

WARNING: The sample(s) to which the findings recorded herein (the "Findings") relate was(were) drawn and / or provided by the Client or by a third party acting at the Client's direction. The Findings constitute no warranty of the sample's representativeness of any goods and strictly relate to the sample(s). The Company accepts no liability with regard to the origin or source from which the sample(s) is/are said to be extracted.



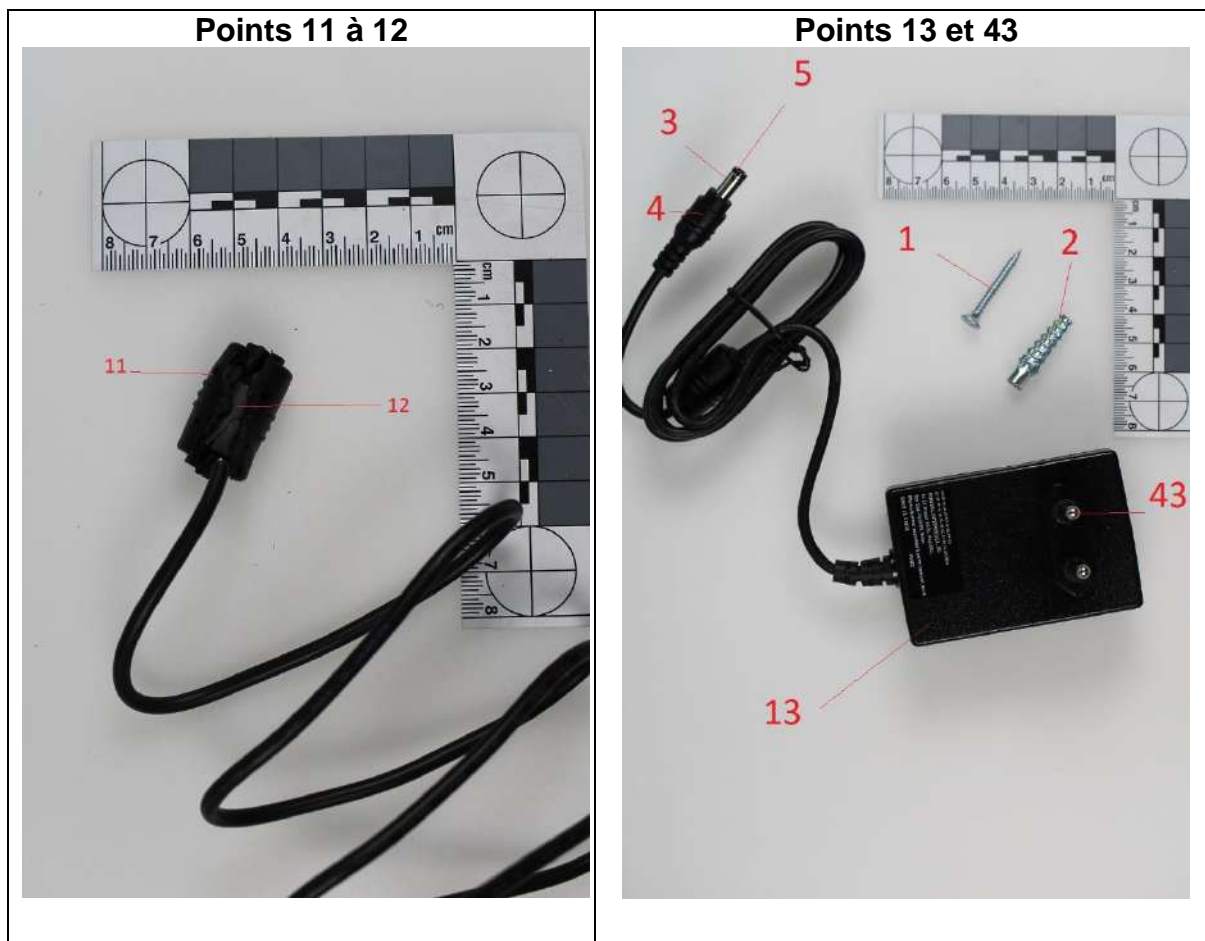
**Rapport d'essais** No. RN22-07517 Date : 07/12/2022 Page 14/26  
*Test Report*

Détails des parties testées / *Details of the tested items :*



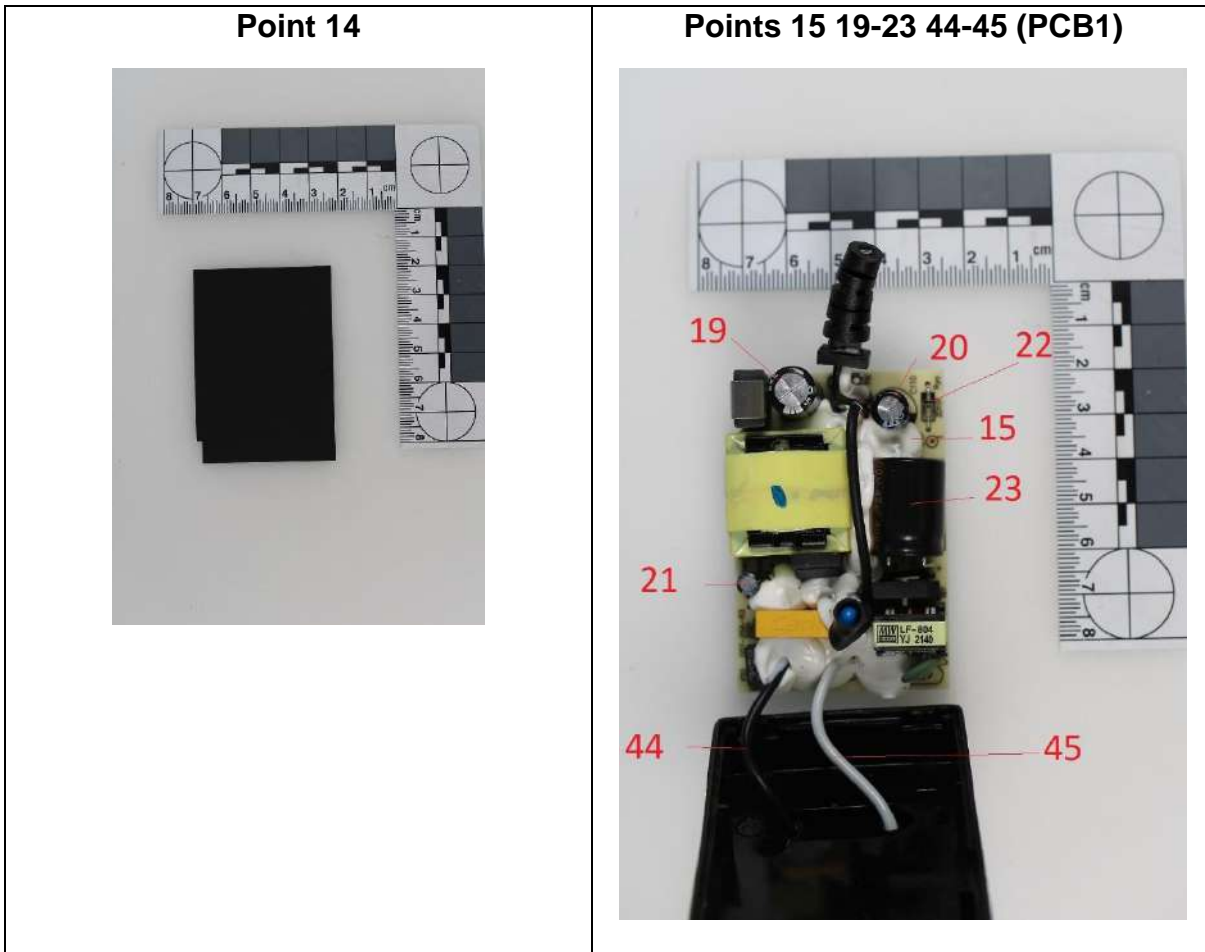
(1) Assays subcontracted in a SGS laboratory (2) Assays subcontracted in a partner laboratory.  
 Abbreviations ME or MO described within the field "parameters" of this report mean "Internal method" (adapting from the reference text if described hereinafter)  
 The testing report only concerns materials or products submitted for assay. The duplication of this document is only authorized in its entirety without the written permission of the laboratory. The present report is issued by the company in accordance with its general conditions of services. (Copy available on request).  
 This document is issued by the Company subject to its General Conditions of Service available on request or accessible at <http://www.sgs.com/en/Terms-and-Conditions.aspx> and, for electronic format documents, subject to Terms and Conditions for Electronic Documents at <http://www.sgs.com/en/Terms-and-Conditions/Terms-e-Document.aspx>  
 Attention is drawn to the limitation of liability, indemnification and jurisdiction and to the use of SGS and COFRAC brand-names issues defined therein. Any holder of this document is advised that information contained hereon reflects the Company's findings at the time of its intervention only and within the limits of Client's instructions, if any. The Company's sole responsibility is to its Client and this document does not exonerate parties to a transaction from exercising all their rights and obligations under the transaction documents. This document cannot be reproduced except in full, without prior written approval of the Company. Any unauthorized alteration, forgery or falsification of the content or appearance of this document is unlawful and offenders may be prosecuted to the fullest extent of the law.  
 Unless otherwise stated the results shown in this test report refer only to the sample(s) tested and such sample(s) are retained for 60 days only (indeed less depending on kind of sample(s)) or more than 60 days according to particular client's request.  
 WARNING: The sample(s) to which the findings recorded herein (the "Findings") relate was(were) drawn and / or provided by the Client or by a third party acting at the Client's direction. The Findings constitute no warranty of the sample's representativeness of any goods and strictly relate to the sample(s). The Company accepts no liability with regard to the origin or source from which the sample(s) is/are said to be extracted.

**Rapport d'essais** No. RN22-07517 Date : 07/12/2022 Page 15/26  
*Test Report*



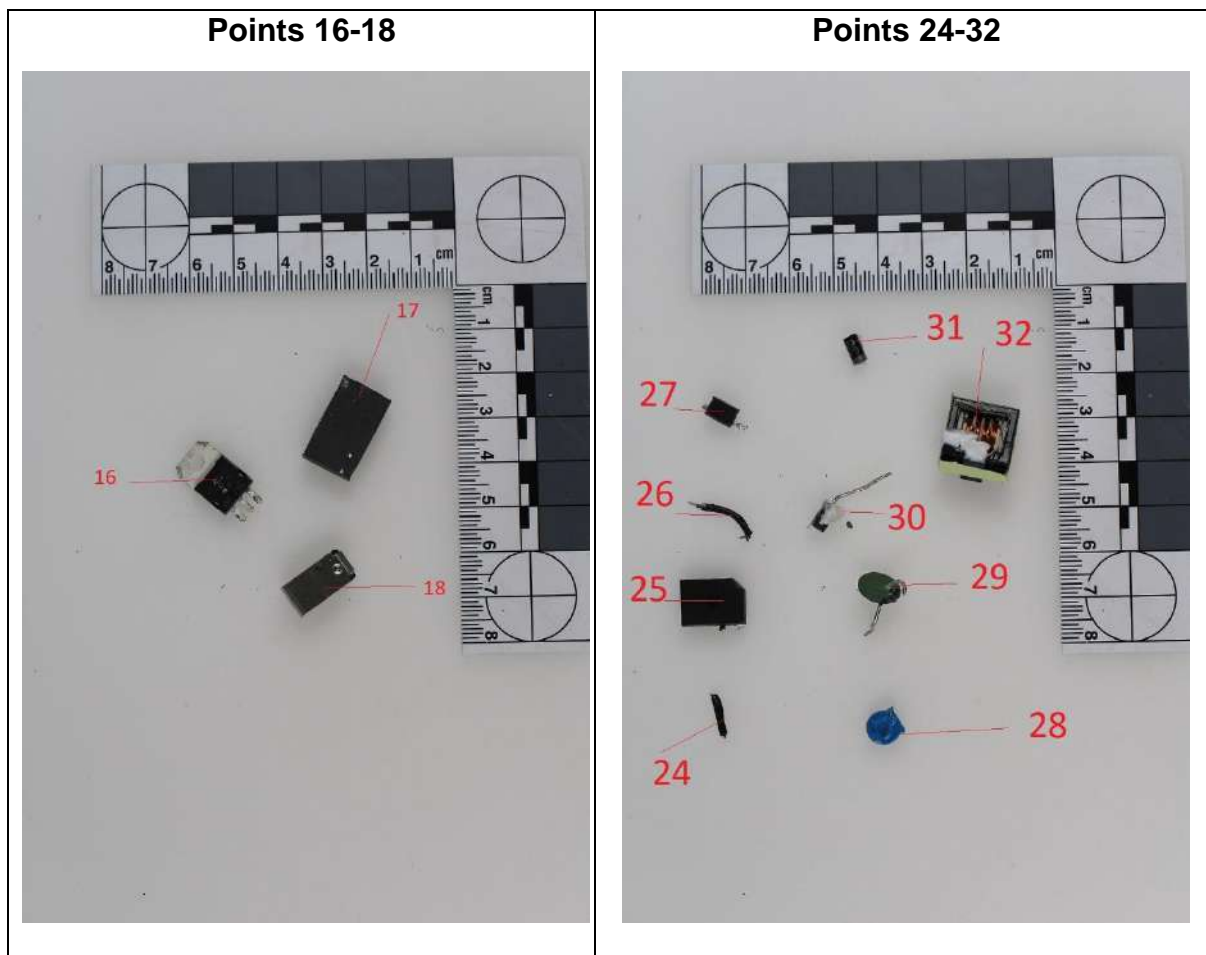
(1) Assays subcontracted in a SGS laboratory (2) Assays subcontracted in a partner laboratory.  
Abbreviations ME or MO described within the field "parameters" of this report mean "Internal method" (adapting from the reference text if described hereinafter)  
The testing report only concerns materials or products submitted for assay. The duplication of this document is only authorized in its entirety without the written permission of the laboratory. The present report is issued by the company in accordance with its general conditions of services. (Copy available on request).  
This document is issued by the Company subject to its General Conditions of Service available on request or accessible at <http://www.sgs.com/en/Terms-and-Conditions.aspx> and, for electronic format documents, subject to Terms and Conditions for Electronic Documents at <http://www.sgs.com/en/Terms-and-Conditions/Terms-e-Document.aspx>  
Attention is drawn to the limitation of liability, indemnification and jurisdiction and to the use of SGS and COFRAC brand-names issues defined therein. Any holder of this document is advised that information contained hereon reflects the Company's findings at the time of its intervention only and within the limits of Client's instructions, if any. The Company's sole responsibility is to its Client and this document does not exonerate parties to a transaction from exercising all their rights and obligations under the transaction documents. This document cannot be reproduced except in full, without prior written approval of the Company. Any unauthorized alteration, forgery or falsification of the content or appearance of this document is unlawful and offenders may be prosecuted to the fullest extent of the law.  
Unless otherwise stated the results shown in this test report refer only to the sample(s) tested and such sample(s) are retained for 60 days only (indeed less depending on kind of sample(s)) or more than 60 days according to particular client's request.  
WARNING: The sample(s) to which the findings recorded herein (the "Findings") relate was(were) drawn and / or provided by the Client or by a third party acting at the Client's direction. The Findings constitute no warranty of the sample's representativeness of any goods and strictly relate to the sample(s). The Company accepts no liability with regard to the origin or source from which the sample(s) is/are said to be extracted.

**Rapport d'essais** No. RN22-07517 Date : 07/12/2022 Page 16/26  
*Test Report*



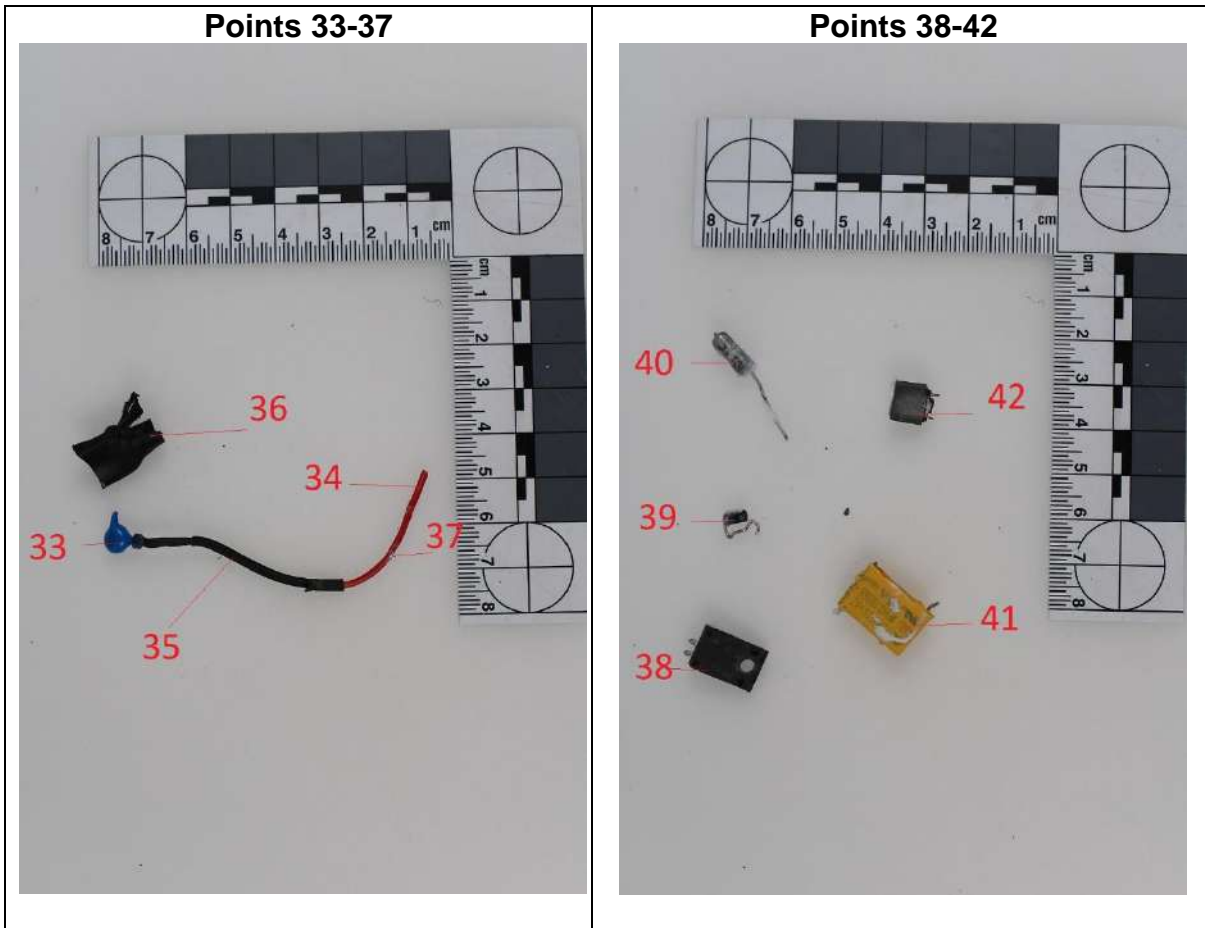
(1) Assays subcontracted in a SGS laboratory (2) Assays subcontracted in a partner laboratory.  
 Abbreviations ME or MO described within the field "parameters" of this report mean "Internal method" (adapting from the reference text if described hereinafter)  
 The testing report only concerns materials or products submitted for assay. The duplication of this document is only authorized in its entirety without the written permission of the laboratory. The present report is issued by the company in accordance with its general conditions of services. (Copy available on request).  
 This document is issued by the Company subject to its General Conditions of Service available on request or accessible at <http://www.sgs.com/en/Terms-and-Conditions.aspx> and, for electronic format documents, subject to Terms and Conditions for Electronic Documents at <http://www.sgs.com/en/Terms-and-Conditions/Terms-e-Documents.aspx>  
 Attention is drawn to the limitation of liability, indemnification and jurisdiction and to the use of SGS and COFRAC brand-names issues defined therein. Any holder of this document is advised that information contained hereon reflects the Company's findings at the time of its intervention only and within the limits of Client's instructions, if any. The Company's sole responsibility is to its Client and this document does not exonerate parties to a transaction from exercising all their rights and obligations under the transaction documents. This document cannot be reproduced except in full, without prior written approval of the Company. Any unauthorized alteration, forgery or falsification of the content or appearance of this document is unlawful and offenders may be prosecuted to the fullest extent of the law.  
 Unless otherwise stated the results shown in this test report refer only to the sample(s) tested and such sample(s) are retained for 60 days only (indeed less depending on kind of sample(s)) or more than 60 days according to particular client's request.  
 WARNING: The sample(s) to which the findings recorded herein (the "Findings") relate was(were) drawn and / or provided by the Client or by a third party acting at the Client's direction. The Findings constitute no warranty of the sample's representativeness of any goods and strictly relate to the sample(s). The Company accepts no liability with regard to the origin or source from which the sample(s) is/are said to be extracted.

**Rapport d'essais** No. RN22-07517 Date : 07/12/2022 Page 17/26  
*Test Report*



(1) Assays subcontracted in a SGS laboratory (2) Assays subcontracted in a partner laboratory.  
 Abbreviations ME or MO described within the field "parameters" of this report mean "Internal method" (adapting from the reference text if described hereinafter)  
 The testing report only concerns materials or products submitted for assay. The duplication of this document is only authorized in its entirety without the written permission of the laboratory. The present report is issued by the company in accordance with its general conditions of services. (Copy available on request).  
 This document is issued by the Company subject to its General Conditions of Service available on request or accessible at <http://www.sgs.com/en/Terms-and-Conditions.aspx> and, for electronic format documents, subject to Terms and Conditions for Electronic Documents at <http://www.sgs.com/en/Terms-and-Conditions/Terms-e-Document.aspx>  
 Attention is drawn to the limitation of liability, indemnification and jurisdiction and to the use of SGS and COFRAC brand-names issues defined therein. Any holder of this document is advised that information contained hereon reflects the Company's findings at the time of its intervention only and within the limits of Client's instructions, if any. The Company's sole responsibility is to its Client and this document does not exonerate parties to a transaction from exercising all their rights and obligations under the transaction documents. This document cannot be reproduced except in full, without prior written approval of the Company. Any unauthorized alteration, forgery or falsification of the content or appearance of this document is unlawful and offenders may be prosecuted to the fullest extent of the law.  
 Unless otherwise stated the results shown in this test report refer only to the sample(s) tested and such sample(s) are retained for 60 days only (indeed less depending on kind of sample(s)) or more than 60 days according to particular client's request.  
 WARNING: The sample(s) to which the findings recorded herein (the "Findings") relate was(were) drawn and / or provided by the Client or by a third party acting at the Client's direction. The Findings constitute no warranty of the sample's representativeness of any goods and strictly relate to the sample(s). The Company accepts no liability with regard to the origin or source from which the sample(s) is/are said to be extracted.

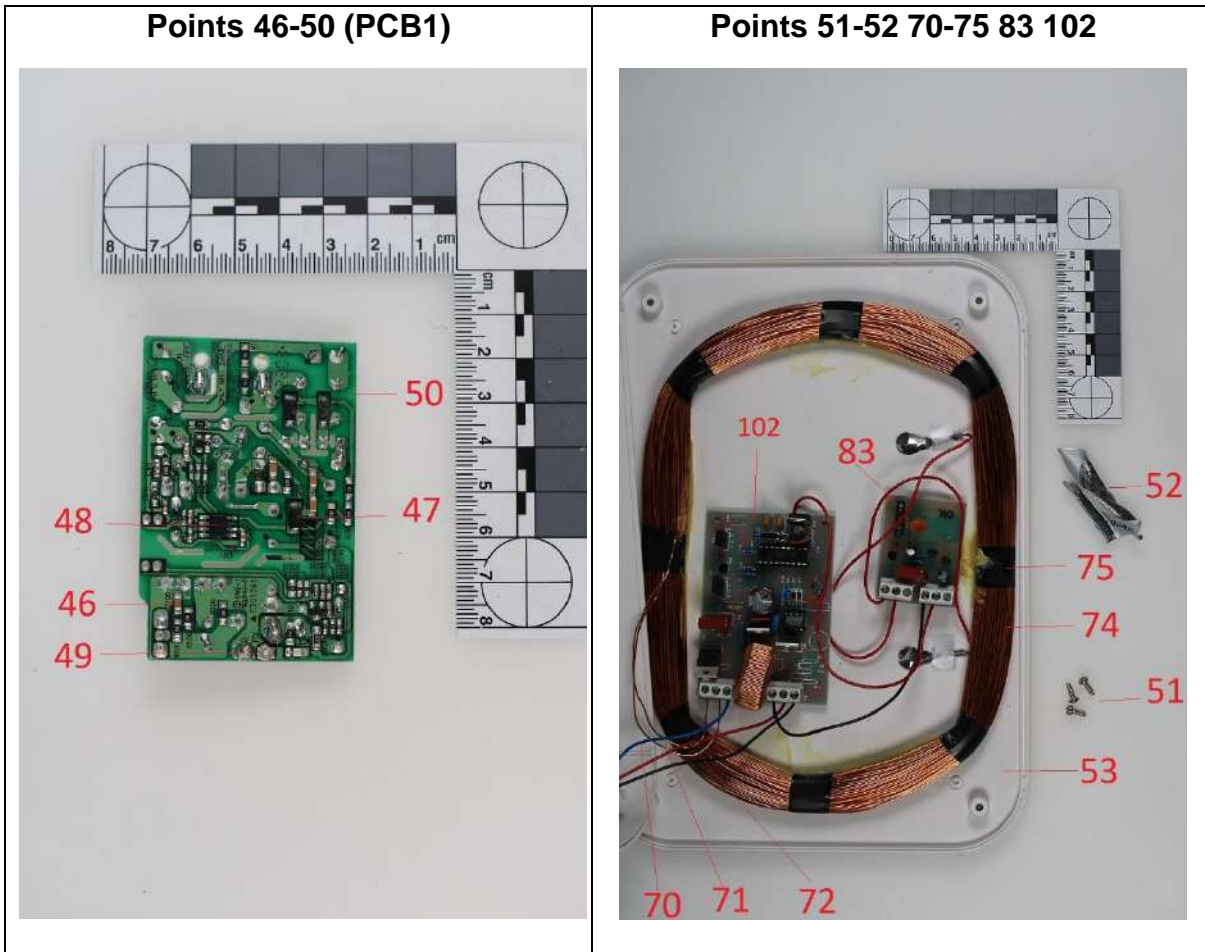
**Rapport d'essais** No. RN22-07517 Date : 07/12/2022 Page 18/26  
*Test Report*



(1) Assays subcontracted in a SGS laboratory (2) Assays subcontracted in a partner laboratory.  
 Abbreviations ME or MO described within the field "parameters" of this report mean "Internal method" (adapting from the reference text if described hereinafter)  
 The testing report only concerns materials or products submitted for assay. The duplication of this document is only authorized in its entirety without the written permission of the laboratory. The present report is issued by the company in accordance with its general conditions of services. (Copy available on request).  
 This document is issued by the Company subject to its General Conditions of Service available on request or accessible at <http://www.sgs.com/en/Terms-and-Conditions.aspx> and, for electronic format documents, subject to Terms and Conditions for Electronic Documents at <http://www.sgs.com/en/Terms-and-Conditions/Terms-e-Documents.aspx>  
 Attention is drawn to the limitation of liability, indemnification and jurisdiction and to the use of SGS and COFRAC brand-names issues defined therein. Any holder of this document is advised that information contained hereon reflects the Company's findings at the time of its intervention only and within the limits of Client's instructions, if any. The Company's sole responsibility is to its Client and this document does not exonerate parties to a transaction from exercising all their rights and obligations under the transaction documents. This document cannot be reproduced except in full, without prior written approval of the Company. Any unauthorized alteration, forgery or falsification of the content or appearance of this document is unlawful and offenders may be prosecuted to the fullest extent of the law.  
 Unless otherwise stated the results shown in this test report refer only to the sample(s) tested and such sample(s) are retained for 60 days only (indeed less depending on kind of sample(s)) or more than 60 days according to particular client's request.  
 WARNING: The sample(s) to which the findings recorded herein (the "Findings") relate was(were) drawn and / or provided by the Client or by a third party acting at the Client's direction. The Findings constitute no warranty of the sample's representativeness of any goods and strictly relate to the sample(s). The Company accepts no liability with regard to the origin or source from which the sample(s) is/are said to be extracted.

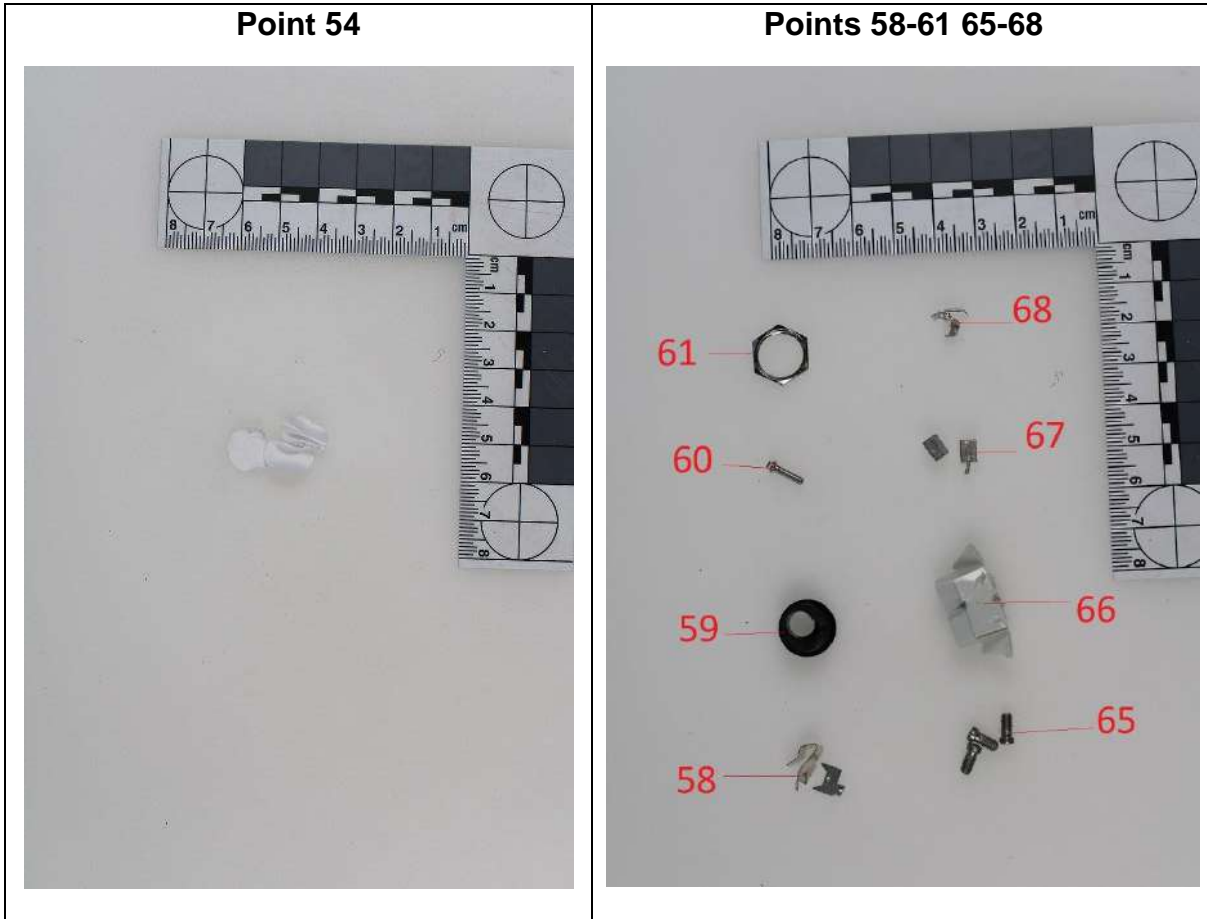


**Rapport d'essais** No. RN22-07517 Date : 07/12/2022 Page 19/26  
*Test Report*



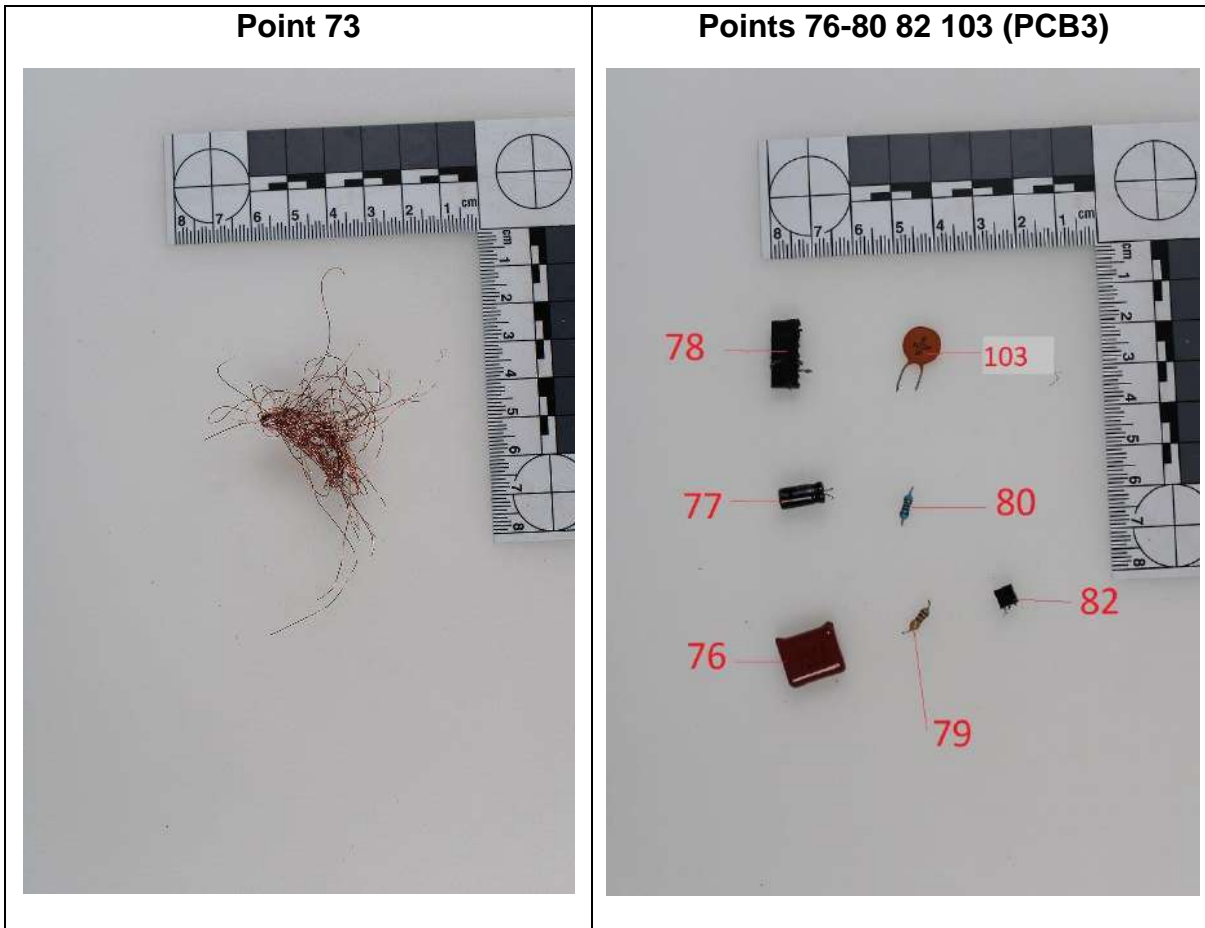
(1) Assays subcontracted in a SGS laboratory (2) Assays subcontracted in a partner laboratory.  
 Abbreviations ME or MO described within the field "parameters" of this report mean "Internal method" (adapting from the reference text if described hereinafter)  
 The testing report only concerns materials or products submitted for assay. The duplication of this document is only authorized in its entirety without the written permission of the laboratory. The present report is issued by the company in accordance with its general conditions of services. (Copy available on request).  
 This document is issued by the Company subject to its General Conditions of Service available on request or accessible at <http://www.sgs.com/en/Terms-and-Conditions.aspx> and, for electronic format documents, subject to Terms and Conditions for Electronic Documents at <http://www.sgs.com/en/Terms-and-Conditions/Terms-e-Document.aspx>  
 Attention is drawn to the limitation of liability, indemnification and jurisdiction and to the use of SGS and COFRAC brand-names issues defined therein. Any holder of this document is advised that information contained hereon reflects the Company's findings at the time of its intervention only and within the limits of Client's instructions, if any. The Company's sole responsibility is to its Client and this document does not exonerate parties to a transaction from exercising all their rights and obligations under the transaction documents. This document cannot be reproduced except in full, without prior written approval of the Company. Any unauthorized alteration, forgery or falsification of the content or appearance of this document is unlawful and offenders may be prosecuted to the fullest extent of the law.  
 Unless otherwise stated the results shown in this test report refer only to the sample(s) tested and such sample(s) are retained for 60 days only (indeed less depending on kind of sample(s)) or more than 60 days according to particular client's request.  
 WARNING: The sample(s) to which the findings recorded herein (the "Findings") relate was(were) drawn and / or provided by the Client or by a third party acting at the Client's direction. The Findings constitute no warranty of the sample's representativeness of any goods and strictly relate to the sample(s). The Company accepts no liability with regard to the origin or source from which the sample(s) is/are said to be extracted.

**Rapport d'essais** No. RN22-07517 Date : 07/12/2022 Page 20/26  
*Test Report*



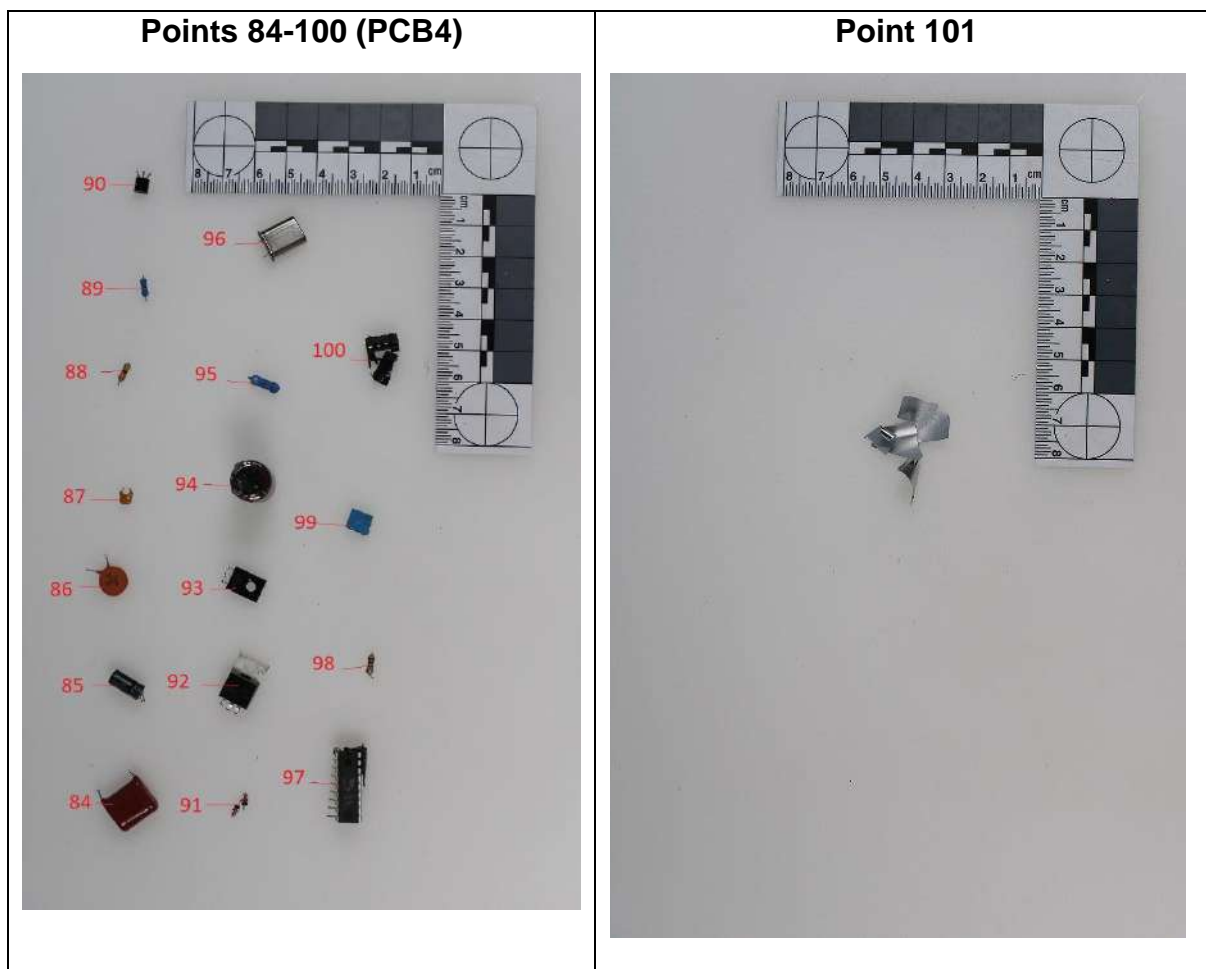
(1) Assays subcontracted in a SGS laboratory (2) Assays subcontracted in a partner laboratory.  
Abbreviations ME or MO described within the field "parameters" of this report mean "Internal method" (adapting from the reference text if described hereinafter)  
The testing report only concerns materials or products submitted for assay. The duplication of this document is only authorized in its entirety without the written permission of the laboratory. The present report is issued by the company in accordance with its general conditions of services. (Copy available on request).  
This document is issued by the Company subject to its General Conditions of Service available on request or accessible at <http://www.sgs.com/en/Terms-and-Conditions.aspx> and, for electronic format documents, subject to Terms and Conditions for Electronic Documents at <http://www.sgs.com/en/Terms-and-Conditions/Terms-e-Document.aspx>  
Attention is drawn to the limitation of liability, indemnification and jurisdiction and to the use of SGS and COFRAC brand-names issues defined therein. Any holder of this document is advised that information contained hereon reflects the Company's findings at the time of its intervention only and within the limits of Client's instructions, if any. The Company's sole responsibility is to its Client and this document does not exonerate parties to a transaction from exercising all their rights and obligations under the transaction documents. This document cannot be reproduced except in full, without prior written approval of the Company. Any unauthorized alteration, forgery or falsification of the content or appearance of this document is unlawful and offenders may be prosecuted to the fullest extent of the law.  
Unless otherwise stated the results shown in this test report refer only to the sample(s) tested and such sample(s) are retained for 60 days only (indeed less depending on kind of sample(s)) or more than 60 days according to particular client's request.  
WARNING: The sample(s) to which the findings recorded herein (the "Findings") relate was(were) drawn and / or provided by the Client or by a third party acting at the Client's direction. The Findings constitute no warranty of the sample's representativeness of any goods and strictly relate to the sample(s). The Company accepts no liability with regard to the origin or source from which the sample(s) is/are said to be extracted.

**Rapport d'essais** No. RN22-07517 Date : 07/12/2022 Page 21/26  
*Test Report*



(1) Assays subcontracted in a SGS laboratory (2) Assays subcontracted in a partner laboratory.  
 Abbreviations ME or MO described within the field "parameters" of this report mean "Internal method" (adapting from the reference text if described hereinafter)  
 The testing report only concerns materials or products submitted for assay. The duplication of this document is only authorized in its entirety without the written permission of the laboratory. The present report is issued by the company in accordance with its general conditions of services. (Copy available on request).  
 This document is issued by the Company subject to its General Conditions of Service available on request or accessible at <http://www.sgs.com/en/Terms-and-Conditions.aspx> and, for electronic format documents, subject to Terms and Conditions for Electronic Documents at <http://www.sgs.com/en/Terms-and-Conditions/Terms-e-Document.aspx>  
 Attention is drawn to the limitation of liability, indemnification and jurisdiction and to the use of SGS and COFRAC brand-names issues defined therein. Any holder of this document is advised that information contained hereon reflects the Company's findings at the time of its intervention only and within the limits of Client's instructions, if any. The Company's sole responsibility is to its Client and this document does not exonerate parties to a transaction from exercising all their rights and obligations under the transaction documents. This document cannot be reproduced except in full, without prior written approval of the Company. Any unauthorized alteration, forgery or falsification of the content or appearance of this document is unlawful and offenders may be prosecuted to the fullest extent of the law.  
 Unless otherwise stated the results shown in this test report refer only to the sample(s) tested and such sample(s) are retained for 60 days only (indeed less depending on kind of sample(s)) or more than 60 days according to particular client's request.  
 WARNING: The sample(s) to which the findings recorded herein (the "Findings") relate was(were) drawn and / or provided by the Client or by a third party acting at the Client's direction. The Findings constitute no warranty of the sample's representativeness of any goods and strictly relate to the sample(s). The Company accepts no liability with regard to the origin or source from which the sample(s) is/are said to be extracted.

**Rapport d'essais** No. RN22-07517 Date : 07/12/2022 Page 22/26  
*Test Report*



SGS authentifie uniquement la photo du rapport original / SGS authenticate the photo on original report only

(1) Assays subcontracted in a SGS laboratory (2) Assays subcontracted in a partner laboratory.  
 Abbreviations ME or MO described within the field "parameters" of this report mean "Internal method" (adapting from the reference text if described hereinafter)  
 The testing report only concerns materials or products submitted for assay. The duplication of this document is only authorized in its entirety without the written permission of the laboratory. The present report is issued by the company in accordance with its general conditions of services. (Copy available on request).  
 This document is issued by the Company subject to its General Conditions of Service available on request or accessible at <http://www.sgs.com/en/Terms-and-Conditions.aspx> and, for electronic format documents, subject to Terms and Conditions for Electronic Documents at <http://www.sgs.com/en/Terms-and-Conditions/Terms-e-Documents.aspx>  
 Attention is drawn to the limitation of liability, indemnification and jurisdiction and to the use of SGS and COFRAC brand-names issues defined therein. Any holder of this document is advised that information contained hereon reflects the Company's findings at the time of its intervention only and within the limits of Client's instructions, if any. The Company's sole responsibility is to its Client and this document does not exonerate parties to a transaction from exercising all their rights and obligations under the transaction documents. This document cannot be reproduced except in full, without prior written approval of the Company. Any unauthorized alteration, forgery or falsification of the content or appearance of this document is unlawful and offenders may be prosecuted to the fullest extent of the law.  
 Unless otherwise stated the results shown in this test report refer only to the sample(s) tested and such sample(s) are retained for 60 days only (indeed less depending on kind of sample(s)) or more than 60 days according to particular client's request.  
 WARNING: The sample(s) to which the findings recorded herein (the "Findings") relate was(were) drawn and / or provided by the Client or by a third party acting at the Client's direction. The Findings constitute no warranty of the sample's representativeness of any goods and strictly relate to the sample(s). The Company accepts no liability with regard to the origin or source from which the sample(s) is/are said to be extracted.

**Rapport d'essais** No. RN22-07517 Date : 07/12/2022 Page 23/26  
*Test Report*

**ANNEXE I / APPENDIX I**

Note :

- (a) mg/kg = ppm ; 0.1% m/m = 1000 ppm
- (b) LQ = Limite de quantification / *MQL = Method Quantification Limit*
- (c) – = Non réglementé / *Not regulated*

<b>Matériaux polymériques / Polymer materials</b>				
Paramètres / <i>Parameters</i>	Unité / <i>Unit</i>	Méthode / <i>Method</i>	LQ / <i>MQL</i>	Spécifications / <i>Limits</i>
Cadmium	mg/kg	IEC 62321-5 (ICP-AES)	1,5	100
Plomb / <i>Lead</i>	mg/kg	IEC 62321-5 (ICP-AES)	3	1000
Mercure / <i>Mercury</i>	mg/kg	IEC 62321-4 (ICP-AES)	3	1000
Chrome hexavalent (CrVI) / <i>Hexavalent chromium (CrVI)</i>	mg/kg	MO341 (UV-VIS)	20	1000
<b>Somme des PBBs / <i>Sum of PBBs</i></b>	mg/kg	ME310 (GC/MS)	20	1000
Monobromobiphenyl (exprimés en / <i>expressed in</i> BB-2 CAS 2113-57-7)	mg/kg	ME310 (GC/MS)	1	-
Dibromobiphenyl (exprimés en / <i>expressed in</i> BB-15 CAS 92-86-4)	mg/kg	ME310 (GC/MS)	1	-
Tribromobiphenyl (exprimés en / <i>expressed in</i> BB-30 CAS 59080-33-0)	mg/kg	ME310 (GC/MS)	1	-
Tetrabromobiphenyl (exprimés en / <i>expressed in</i> BB-49 CAS 60044-24-8)	mg/kg	ME310 (GC/MS)	1	-
Pentabromobiphenyl (exprimés en / <i>expressed in</i> BB-103 CAS 59080-39-6)	mg/kg	ME310 (GC/MS)	1	-
Hexabromobiphenyl (exprimés en / <i>expressed in</i> BB-153 CAS 59080-40-9)	mg/kg	ME310 (GC/MS)	1	-
Heptabromobiphenyl (exprimés en / <i>expressed in</i> BB-189 CAS 88700-06-5)	mg/kg	ME310 (GC/MS)	1	-
Octabromobiphenyl (exprimés en / <i>expressed in</i> BB-194 CAS 67889-00-3)	mg/kg	ME310 (GC/MS)	1	-
Nonabromobiphenyl (exprimés en / <i>expressed in</i> BB-206 CAS 69278-62-2)	mg/kg	ME310 (GC/MS)	2	-
Decabromobiphenyl (exprimés en / <i>expressed in</i> BB-209 CAS 13654-09-6)	mg/kg	ME310 (GC/MS)	10	-
<b>Somme des PBDEs / <i>Sum of PBDEs</i></b>	mg/kg	ME310 (GC/MS)	20	1000
Monobromodiphenyl ether (exprimés en / <i>expressed in</i> BDE-3 CAS 101-55-3)	mg/kg	ME310 (GC/MS)	1	-
Dibromodiphenyl ether (exprimés en / <i>expressed in</i> BDE-15 CAS 2050-47-7)	mg/kg	ME310 (GC/MS)	1	-
Tribromodiphenyl ether (exprimés en / <i>expressed in</i> BDE-35 CAS 147217-80-9)	mg/kg	ME310 (GC/MS)	1	-
Tetrabromodiphenyl ether (exprimés en / <i>expressed in</i> BDE-47 CAS 5436-43-1)	mg/kg	ME310 (GC/MS)	1	-

(1) Assays subcontracted in a SGS laboratory (2) Assays subcontracted in a partner laboratory.  
Abbreviations ME or MO described within the field "parameters" of this report mean "Internal method" (adapting from the reference text if described hereinafter)  
The testing report only concerns materials or products submitted for assay. The duplication of this document is only authorized in its entirety without the written permission of the laboratory. The present report is issued by the company in accordance with its general conditions of services. (Copy available on request).  
This document is issued by the Company subject to its General Conditions of Service available on request or accessible at <http://www.sgs.com/en/Terms-and-Conditions.aspx> and, for electronic format documents, subject to Terms and Conditions for Electronic Documents at <http://www.sgs.com/en/Terms-and-Conditions/Terms-e-Documents.aspx>  
Attention is drawn to the limitation of liability, indemnification and jurisdiction and to the use of SGS and COFRAC brand-names issues defined therein. Any holder of this document is advised that information contained hereon reflects the Company's findings at the time of its intervention only and within the limits of Client's instructions, if any. The Company's sole responsibility is to its Client and this document does not exonerate parties to a transaction from exercising all their rights and obligations under the transaction documents. This document cannot be reproduced except in full, without prior written approval of the Company. Any unauthorized alteration, forgery or falsification of the content or appearance of this document is unlawful and offenders may be prosecuted to the fullest extent of the law.  
Unless otherwise stated the results shown in this test report refer only to the sample(s) tested and such sample(s) are retained for 60 days only (indeed less depending on kind of sample(s)) or more than 60 days according to particular client's request.  
WARNING: The sample(s) to which the findings recorded herein (the "Findings") relate was(were) drawn and / or provided by the Client or by a third party acting at the Client's direction. The Findings constitute no warranty of the sample's representativeness of any goods and strictly relate to the sample(s). The Company accepts no liability with regard to the origin or source from which the sample(s) is/are said to be extracted.



**Rapport d'essais** No. RN22-07517 Date : 07/12/2022 Page 24/26  
*Test Report*

<b>Matériaux polymériques / Polymer materials</b>				
Paramètres / Parameters	Unité / Unit	Méthode / Method	LQ / MQL	Spécifications / Limits
Pentabromodiphenyl ether (exprimés en / <i>expressed in</i> BDE-99 CAS 60348-60-9)	mg/kg	ME310 (GC/MS)	1	-
Hexabromodiphenyl ether (exprimés en / <i>expressed in</i> BDE-153 CAS 68631-49-2)	mg/kg	ME310 (GC/MS)	1	-
Heptabromodiphenyl ether (exprimés en / <i>expressed in</i> BDE-183 CAS 207122-16-5)	mg/kg	ME310 (GC/MS)	1	-
Octabromodiphenyl ether (exprimés en / <i>expressed in</i> BDE-197 CAS 117964-21-3)	mg/kg	ME310 (GC/MS)	1	-
Nonabromodiphenyl ether (exprimés en / <i>expressed in</i> BDE-207 CAS 437701-79-6)	mg/kg	ME310 (GC/MS)	2	-
Decabromodiphenyl ether (exprimés en / <i>expressed in</i> BDE-209 CAS 1163-19-5)	mg/kg	ME310 (GC/MS)	10	-

<b>Matériaux métalliques / Metallic materials</b>				
Paramètres / Parameters	Unité / Unit	Méthode / Method	LQ / MQL	Spécifications / Limits
Cadmium	mg/kg	IEC 62321-5 (ICP-AES)	0.5	100
Plomb / Lead	mg/kg	IEC 62321-5 (ICP-AES)	1	1000
Mercure / Mercury	mg/kg	IEC 62321-4 (ICP-AES)	3	1000
Chrome hexavalent (CrVI) / <i>Hexavalent chromium (CrVI)</i>	µg/cm <sup>2</sup>	MO342 (UV-VIS)	0.10	-

<b>Matériaux composites / Composite materials</b>				
Paramètres / Parameters	Unité / Unit	Méthode / Method	LQ / MQL	Spécifications / Limits
Cadmium	mg/kg	IEC 62321-5 (ICP-AES)	0.5	100
Plomb / Lead	mg/kg	IEC 62321-5 (ICP-AES)	1	1000
Mercure / Mercury	mg/kg	IEC 62321-4 (ICP-AES)	3	1000
Chrome hexavalent (CrVI) (***) / <i>Hexavalent chromium (CrVI) (***)</i>	mg/kg	MO342 (UV-VIS)	10	1000
<b>Somme des PBBs / Sum of PBBs</b>	mg/kg	ME310 (GC/MS)	20	1000
Monobromobiphenyl (exprimés / <i>expressed in</i> en BB-2 CAS 2113-57-7)	mg/kg	ME310 (GC/MS)	1	-
Dibromobiphenyl (exprimés en / <i>expressed in</i> BB-15 CAS 92-86-4)	mg/kg	ME310 (GC/MS)	1	-
Tribromobiphenyl (exprimés en / <i>expressed in</i> BB-30 CAS 59080-33-0)	mg/kg	ME310 (GC/MS)	1	-

(1) Assays subcontracted in a SGS laboratory (2) Assays subcontracted in a partner laboratory.  
Abbreviations ME or MO described within the field "parameters" of this report mean "Internal method" (adapting from the reference text if described hereinafter)  
The testing report only concerns materials or products submitted for assay. The duplication of this document is only authorized in its entirety without the written permission of the laboratory. The present report is issued by the company in accordance with its general conditions of services. (Copy available on request).  
This document is issued by the Company subject to its General Conditions of Service available on request or accessible at <http://www.sgs.com/en/Terms-and-Conditions.aspx> and, for electronic format documents, subject to Terms and Conditions for Electronic Documents at <http://www.sgs.com/en/Terms-and-Conditions/Terms-e-Documents.aspx>  
Attention is drawn to the limitation of liability, indemnification and jurisdiction and to the use of SGS and COFRAC brand-names issues defined therein. Any holder of this document is advised that information contained hereon reflects the Company's findings at the time of its intervention only and within the limits of Client's instructions, if any. The Company's sole responsibility is to its Client and this document does not exonerate parties to a transaction from exercising all their rights and obligations under the transaction documents. This document cannot be reproduced except in full, without prior written approval of the Company. Any unauthorized alteration, forgery or falsification of the content or appearance of this document is unlawful and offenders may be prosecuted to the fullest extent of the law.  
Unless otherwise stated the results shown in this test report refer only to the sample(s) tested and such sample(s) are retained for 60 days only (indeed less depending on kind of sample(s)) or more than 60 days according to particular client's request.  
WARNING: The sample(s) to which the findings recorded herein (the "Findings") relate was(were) drawn and / or provided by the Client or by a third party acting at the Client's direction. The Findings constitute no warranty of the sample's representativeness of any goods and strictly relate to the sample(s). The Company accepts no liability with regard to the origin or source from which the sample(s) is/are said to be extracted.

**Rapport d'essais** No. RN22-07517 Date : 07/12/2022 Page 25/26  
*Test Report*

<b>Matériaux composites / Composite materials</b>				
Paramètres / <i>Parameters</i>	Unité / <i>Unit</i>	Méthode / <i>Method</i>	LQ / <i>MQL</i>	Spécifications / <i>Limits</i>
Tetrabromobiphenyl (exprimés en / <i>expressed in</i> BB-49 CAS 60044-24-8)	mg/kg	ME310 (GC/MS)	1	-
Pentabromobiphenyl (exprimés en / <i>expressed in</i> BB-103 CAS 59080-39-6)	mg/kg	ME310 (GC/MS)	1	-
Hexabromobiphenyl (exprimés en / <i>expressed in</i> BB-153 CAS 59080-40-9)	mg/kg	ME310 (GC/MS)	1	-
Heptabromobiphenyl (exprimés en / <i>expressed in</i> BB-189 CAS 88700-06-5)	mg/kg	ME310 (GC/MS)	1	-
Octabromobiphenyl (exprimés en / <i>expressed in</i> BB-194 CAS 67889-00-3)	mg/kg	ME310 (GC/MS)	1	-
Nonabromobiphenyl (exprimés en / <i>expressed in</i> BB-206 CAS 69278-62-2)	mg/kg	ME310 (GC/MS)	2	-
Decabromobiphenyl (exprimés en / <i>expressed in</i> BB-209 CAS 13654-09-6)	mg/kg	ME310 (GC/MS)	10	-
<b>Somme des PBDEs / <i>Sum of PBDEs</i></b>	mg/kg	ME310 (GC/MS)	20	1000
Monobromodiphenyl ether (exprimés en / <i>expressed in</i> BDE-3 CAS 101-55-3)	mg/kg	ME310 (GC/MS)	1	-
Dibromodiphenyl ether (exprimés en / <i>expressed in</i> BDE-15 CAS 2050-47-7)	mg/kg	ME310 (GC/MS)	1	-
Tribromodiphenyl ether (exprimés en / <i>expressed in</i> BDE-35 CAS 147217-80-9)	mg/kg	ME310 (GC/MS)	1	-
Tetrabromodiphenyl ether (exprimés en / <i>expressed in</i> BDE-47 CAS 5436-43-1)	mg/kg	ME310 (GC/MS)	1	-
Pentabromodiphenyl ether (exprimés en / <i>expressed in</i> BDE-99 CAS 60348-60-9)	mg/kg	ME310 (GC/MS)	1	-
Hexabromodiphenyl ether (exprimés en / <i>expressed in</i> BDE-153 CAS 68631-49-2)	mg/kg	ME310 (GC/MS)	1	-
Heptabromodiphenyl ether (exprimés en / <i>expressed in</i> BDE-183 CAS 207122-16-5)	mg/kg	ME310 (GC/MS)	1	-
Octabromodiphenyl ether (exprimés en / <i>expressed in</i> BDE-197 CAS 117964-21-3)	mg/kg	ME310 (GC/MS)	1	-
Nonabromodiphenyl ether (exprimés en / <i>expressed in</i> BDE-207 CAS 437701-79-6)	mg/kg	ME310 (GC/MS)	2	-
Decabromodiphenyl ether (exprimés en / <i>expressed in</i> BDE-209 CAS 1163-19-5)	mg/kg	ME310 (GC/MS)	10	-

(\*\*\*) Le rendement de dopage n'étant pas valide selon l'IEC 62321 pour la détermination du chrome VI en digestion acide, l'analyse a été réalisée par extraction à l'eau bouillante après broyage / *As the recovery was not validated according to the IEC 62321 for chromium VI content by acid digestion, the test was performed by boiling water extraction after grinding.*

(1) Assays subcontracted in a SGS laboratory (2) Assays subcontracted in a partner laboratory.  
Abbreviations ME or MO described within the field "parameters" of this report mean "Internal method" (adapting from the reference text if described hereinafter)  
The testing report only concerns materials or products submitted for assay. The duplication of this document is only authorized in its entirety without the written permission of the laboratory. The present report is issued by the company in accordance with its general conditions of services. (Copy available on request).  
This document is issued by the Company subject to its General Conditions of Service available on request or accessible at <http://www.sgs.com/en/Terms-and-Conditions.aspx> and, for electronic format documents, subject to Terms and Conditions for Electronic Documents at <http://www.sgs.com/en/Terms-and-Conditions/Terms-e-Documents.aspx>  
Attention is drawn to the limitation of liability, indemnification and jurisdiction and to the use of SGS and COFRAC brand-names issues defined therein. Any holder of this document is advised that information contained hereon reflects the Company's findings at the time of its intervention only and within the limits of Client's instructions, if any. The Company's sole responsibility is to its Client and this document does not exonerate parties to a transaction from exercising all their rights and obligations under the transaction documents. This document cannot be reproduced except in full, without prior written approval of the Company. Any unauthorized alteration, forgery or falsification of the content or appearance of this document is unlawful and offenders may be prosecuted to the fullest extent of the law.  
Unless otherwise stated the results shown in this test report refer only to the sample(s) tested and such sample(s) are retained for 60 days only (indeed less depending on kind of sample(s)) or more than 60 days according to particular client's request.  
WARNING: The sample(s) to which the findings recorded herein (the "Findings") relate was(were) drawn and / or provided by the Client or by a third party acting at the Client's direction. The Findings constitute no warranty of the sample's representativeness of any goods and strictly relate to the sample(s). The Company accepts no liability with regard to the origin or source from which the sample(s) is/are said to be extracted.

**ANNEXE II / APPENDIX II**

Messieurs,

Je vous envoie ce mail pour ainsi vous spécifier que suite aux analyses effectuées sur notre appareils et la non-conformité de notre connecteur, nous prenons l'entière disposition de produire tous les appareils dès à présent avec le gros connecteur qui est conforme selon le rapport RN22-11714.

Bien cordialement

**Olivier BAYLÉ**  
Gérant

+33 (0) 241 773 202  
+33 (0) 787 292 992  
[obayle@bflfrance.com](mailto:obayle@bflfrance.com)

35 rue Joseph Cugnot  
49130 Sainte-Gemmes-Sur-Loire

[www.bflfrance.fr](http://www.bflfrance.fr)

**BFL**<sup>®</sup>  
FRANCE  
Distribution

**NOUVEAU**

**I.P.E.**<sup>®</sup>  
PRO+  
& SON APPLICATION  
MOBILE DE SUIVI

**I.P.E.**<sup>®</sup>  
PRO+

**TOUJOURS PLUS INNOVANT**  
BFL, Leader mondial et propriétaire des marques I.P.E.® et I.P.G.®

**BFL**<sup>®</sup>  
FRANCE  
Distribution

\*\*\* Fin du Rapport d'essai / End of Report \*\*\*

(1) Assays subcontracted in a SGS laboratory (2) Assays subcontracted in a partner laboratory.  
Abbreviations ME or MO described within the field "parameters" of this report mean "Internal method" (adapting from the reference text if described hereinafter)  
The testing report only concerns materials or products submitted for assay. The duplication of this document is only authorized in its entirety without the written permission of the laboratory. The present report is issued by the company in accordance with its general conditions of services. (Copy available on request).  
This document is issued by the Company subject to its General Conditions of Service available on request or accessible at <http://www.sgs.com/en/Terms-and-Conditions.aspx> and, for electronic format documents, subject to Terms and Conditions for Electronic Documents at <http://www.sgs.com/en/Terms-and-Conditions/Terms-e-Documents.aspx>  
Attention is drawn to the limitation of liability, indemnification and jurisdiction and to the use of SGS and COFRAC brand-names issues defined therein. Any holder of this document is advised that information contained hereon reflects the Company's findings at the time of its intervention only and within the limits of Client's instructions, if any. The Company's sole responsibility is to its Client and this document does not exonerate parties to a transaction from exercising all their rights and obligations under the transaction documents. This document cannot be reproduced except in full, without prior written approval of the Company. Any unauthorized alteration, forgery or falsification of the content or appearance of this document is unlawful and offenders may be prosecuted to the fullest extent of the law.  
Unless otherwise stated the results shown in this test report refer only to the sample(s) tested and such sample(s) are retained for 60 days only (indeed less depending on kind of sample(s)) or more than 60 days according to particular client's request.  
WARNING: The sample(s) to which the findings recorded herein (the "Findings") relate was(were) drawn and / or provided by the Client or by a third party acting at the Client's direction. The Findings constitute no warranty of the sample's representativeness of any goods and strictly relate to the sample(s). The Company accepts no liability with regard to the origin or source from which the sample(s) is/are said to be extracted.